

# HALDANE

Papa Sun Catalogue





HALDANE

ABOUT

# PapaSun

Pop. Culture.

With floating rings & plush cushions, outdoor Papa Sun sofas are a contemporary bend on the Japanese papasan chair, popularized in post-war 1950s bohemian culture. The Papa Sun collection boasts 1, 2 & 3-seater sofas as well as the dreamy Papa Sun Lounger.

HALDANE



COLLECTIONS

# Papa Sun

## Sofa 1-Seater

PACK SIZE (MM) L1150 X W1050 X H800

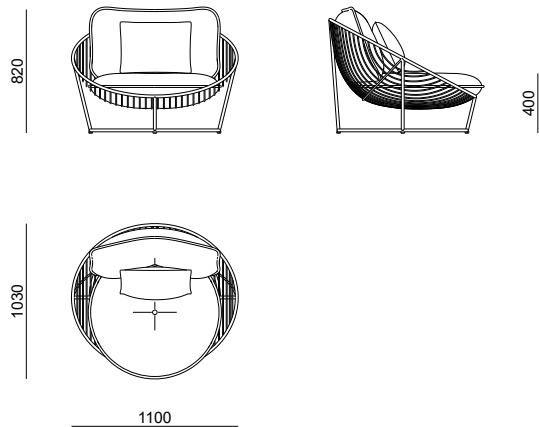
CUBIC METERS 0.97 M<sup>3</sup>

PACK WEIGHT 30 KG

MATERIALS FRAME POWDER COATED 304 STAINLESS STEEL

MATERIALS UPHOLSTERY OUTDOOR FABRICS

MATERIALS SCATTERS OUTDOOR FABRICS



HALDANE

COLLECTIONS

# Papa Sun

## Sofa 2-Seater

**PACK SIZE (MM)** L1950 X W1050 X H800

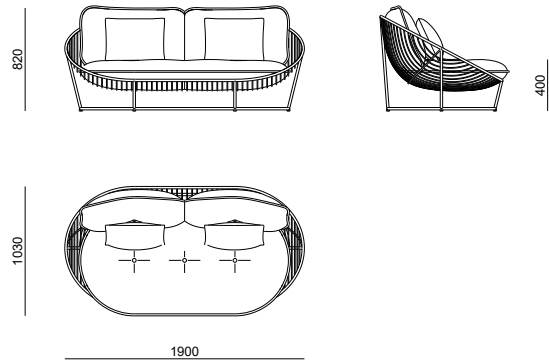
**CUBIC METERS** 1.64 M<sup>2</sup>

**PACK WEIGHT** 60 KG

**MATERIALS** FRAME POWDER COATED 304 STAINLESS STEEL

**MATERIALS** UPHOLSTERY OUTDOOR FABRICS

**MATERIALS** SCATTERS OUTDOOR FABRICS



**HALDANE**

COLLECTIONS

# Papa Sun Sofa 3-Seater

PACK SIZE (MM) L2750 X W1050 X H800

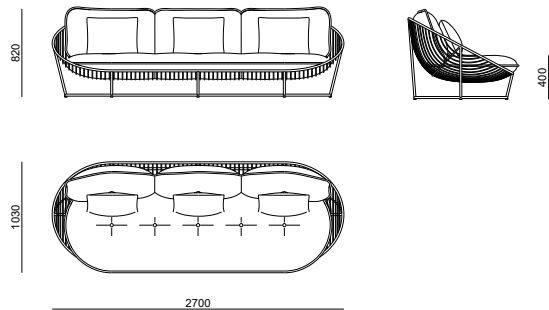
CUBIC METERS 2.31 M<sup>3</sup>

PACK WEIGHT 90 KG

MATERIALS FRAME POWDER COATED 304  
STAINLESS STEEL

MATERIALS UPHOLSTERY OUTDOOR FABRICS

MATERIALS SCATTERS OUTDOOR FABRICS



HALDANE

COLLECTIONS

# Papa Sun Lounger

PACK SIZE (MM) L2070 X W790 X H760

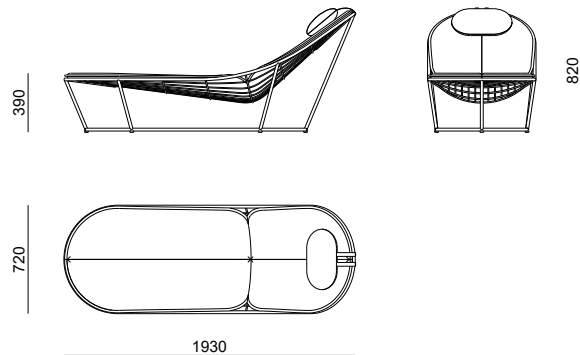
CUBIC METERS 1.24 M<sup>3</sup>

PACK WEIGHT 40 KG

MATERIALS FRAME POWDER COATED 304 STAINLESS STEEL

MATERIALS UPHOLSTERY OUTDOOR FABRICS

MATERIALS HEAD CUSHION OUTDOOR FABRICS



HALDANE

## FINISHES

# Frames Powder Coat

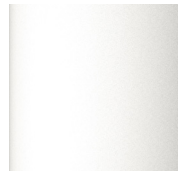
With its ergonomic structure, nest-like Papa Sun frames are manufactured in rust proof stainless steel tubing & supportive curved ribs of 304 stainless steel solid rod. The radiant and durable frames are then powder coated with exterior grade UV stable pure polyester with a luxurious ferro grain finish in the colour of your choice from our extensive colour palette.

### CARE + MAINTENANCE

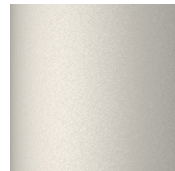
Care for your powder coated stainless steel & aluminium components by wiping when dirty with a damp cloth soaked in a solution of mild detergent (like Sunlight Liquid) and water.

For coastal environments (within 200m of the ocean) it is necessary to make use of Marine Grade stainless steel SS316 and to wipe sea air condensation off of your furniture on a weekly basis.

Avoid harsh chemical cleaning products and scratching with sharp objects as this can damage the powder coating.



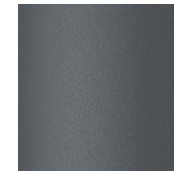
Traffic White



Silk Grey



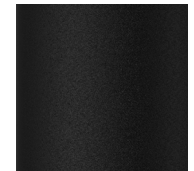
Light Grey



Basalt Grey



Umber Grey



Jet Black



Cream



Beige Red



Coral Red



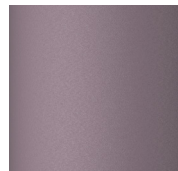
Purple Red



Chestnut Brown



Ochre Brown



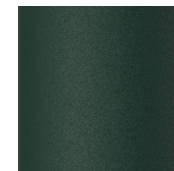
Pastel Violet



Pale Green



Emerald Green



Moss Green



Olive Green



Lemon Yellow



Pastel Turquoise



Gentian Blue



Night Blue



Ocean Blue



FINISHES

# Upholstery

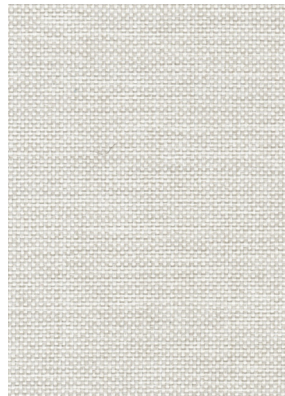
## Crevin Dolce (IMP)

Dolce (IMP) is preferred for fully outdoor conditions as this beautiful and functional upholstery fabric collection is finished with stain-repellence and with an internal layer of waterproof lamination.

### CARE + MAINTENANCE

Brush off loose dirt. When necessary, spray on a cleaning solution of water and mild soap, use a soft bristle brush to clean. Allow cleaning solution to soak into fabric. Rinse thoroughly until all soap residue is removed. Air dry.

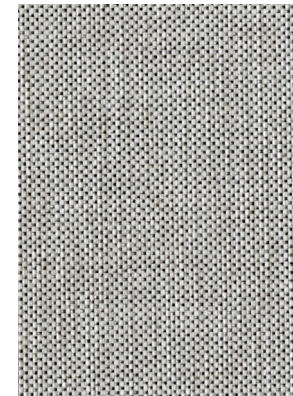
When leaving your furniture out in the elements for a prolonged period, we advise the use of the optional Weather Covers.



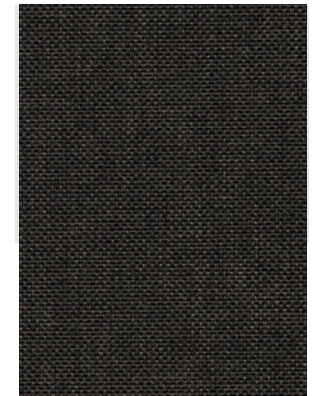
Crevin - Dolce IMP 07 - Shell



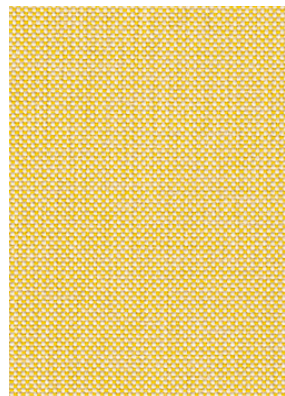
Crevin - Dolce IMP 04 - Cream



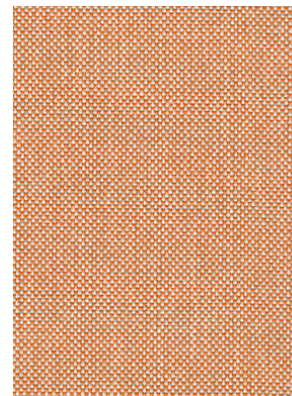
Crevin - Dolce IMP 80 - Cloud



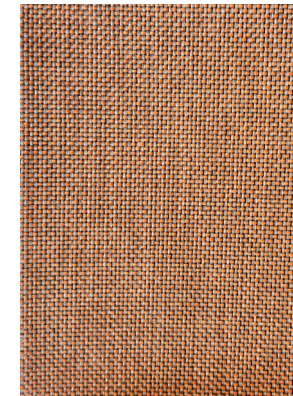
Crevin - Dolce IMP 53 - Charcoal



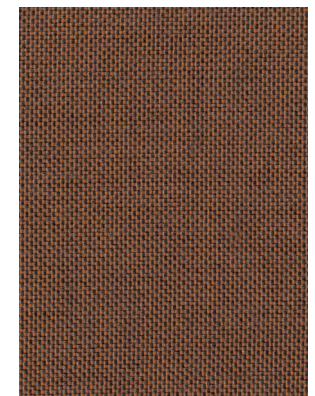
Crevin - Dolce IMP 19 -  
Limoncello



Crevin - Dolce IMP 29 - Peach



Crevin - Dolce IMP 24 - Sunset



Crevin - Dolce IMP 26 - Clay

**HALDANE**

## FINISHES

# Upholstery

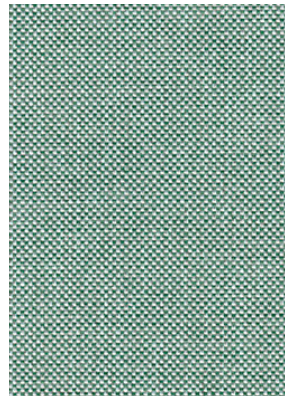
## Crevin Dolce (IMP)

Dolce (IMP) is preferred for fully outdoor conditions as this beautiful and functional upholstery fabric collection is finished with stain-repellence and with an internal layer of waterproof lamination.

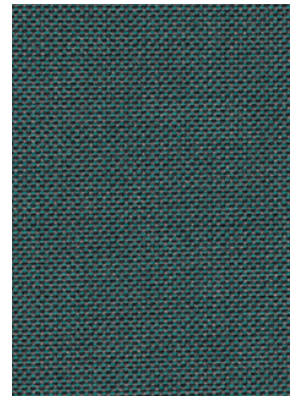
### CARE + MAINTENANCE

Brush off loose dirt. When necessary, spray on a cleaning solution of water and mild soap, use a soft bristle brush to clean. Allow cleaning solution to soak into fabric. Rinse thoroughly until all soap residue is removed. Air dry.

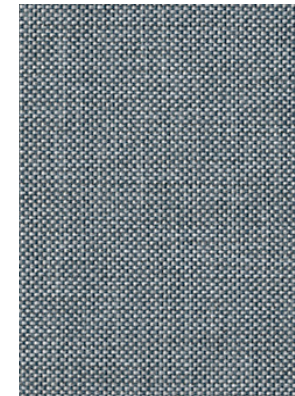
When leaving your furniture out in the elements for a prolonged period, we advise the use of the optional Weather Covers.



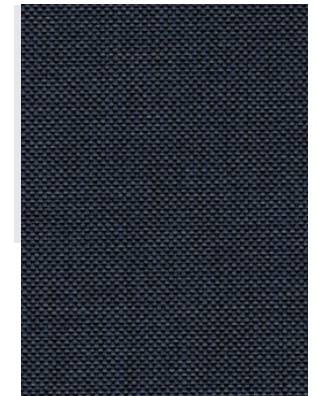
Crevin - Dolce IMP 31 - Turquoise



Crevin - Dolce IMP 33 - Lagoon



Crevin - Dolce IMP 43 - Sky



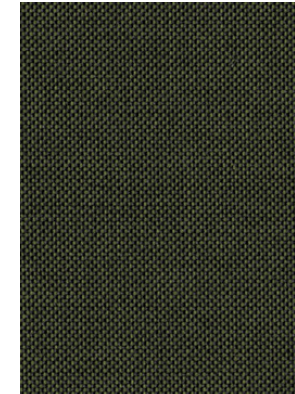
Crevin - Dolce IMP 42 - Indigo



Crevin - Dolce IMP 32 - Avo



Crevin - Dolce IMP 30 - Pistachio



Crevin - Dolce IMP 38 - Olive

## FINISHES

# Upholstery

## Sunbrella Mezzo

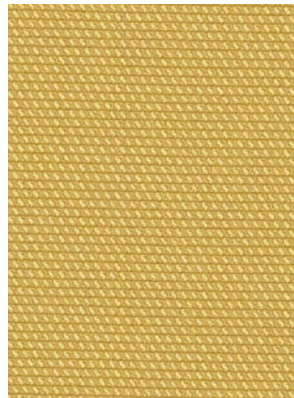
Ideal for covered patios and removable cushions. Timeless and versatile, Natté is a classic upholstery fabric. Natural to the eye and elegant to the touch, in 100% Sunbrella® Acrylic.

Sunbrella® 100% solution dyed acrylic is UV and Fade Resistant, Mold and Mildew Resistant and Bleach Cleanable.

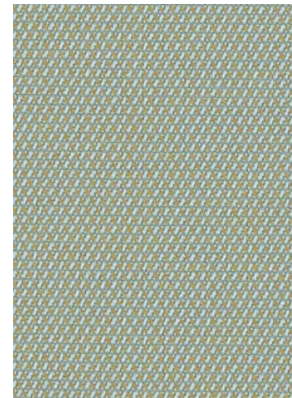
### CARE + MAINTENANCE

Care for your fabric by brushing off loose dirt. When necessary, spray on a cleaning solution of water and mild soap, use a soft bristle brush to clean. Allow cleaning solution to soak into fabric. Rinse thoroughly until all soap residue is removed. Air dry.

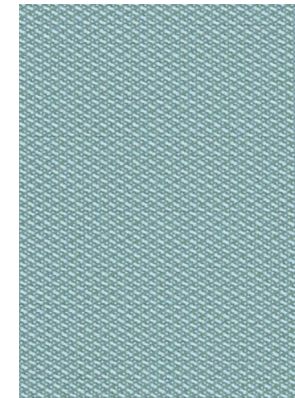
When leaving your furniture out in the elements for a prolonged period, we advise the use of the optional Weather Covers.



Sunbrella - Mezzo - Sulphur



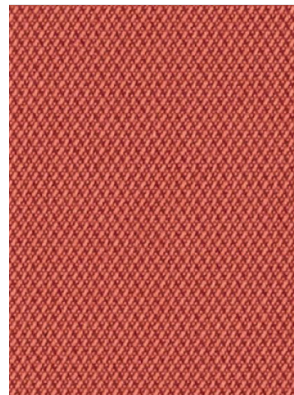
Sunbrella - Mezzo - Opal



Sunbrella - Mezzo - Celadon



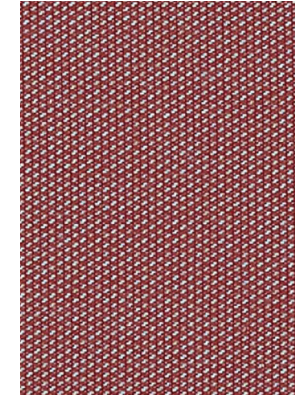
Sunbrella - Mezzo - Tropic



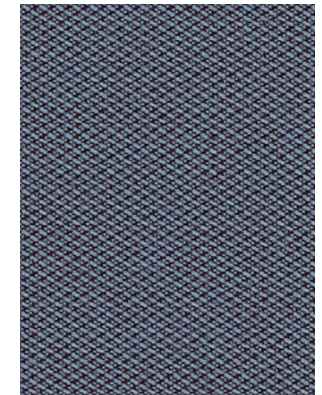
Sunbrella - Mezzo - Tigerlily



Sunbrella - Mezzo - Henna



Sunbrella - Mezzo - Scale



Sunbrella - Mezzo - Feather

FINISHES

# Upholstery

## Sunbrella Natté

Ideal for covered patios and removable cushions. Timeless and versatile, Natté is a classic upholstery fabric. Natural to the eye and elegant to the touch, in 100% Sunbrella® Acrylic.

Sunbrella® 100% solution dyed acrylic is UV and Fade Resistant, Mold and Mildew Resistant and Bleach Cleanable.

Care for your fabric by brushing off loose dirt. When necessary, spray on a cleaning solution of water and mild soap, use a soft bristle brush to clean. Allow cleaning solution to soak into fabric. Rinse thoroughly until all soap residue is removed. Air dry.

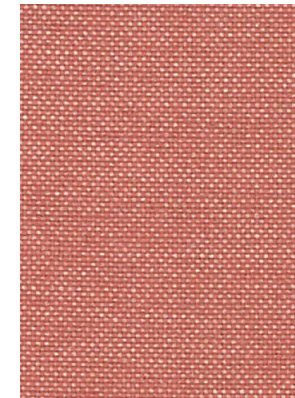
When leaving your furniture out in the elements for a prolonged period, one can opt to bring cushions indoors or make use of Weather Covers.



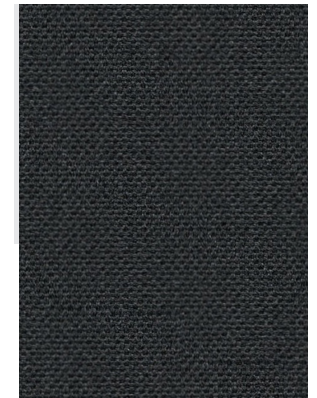
Sunbrella - Natté - Canvas



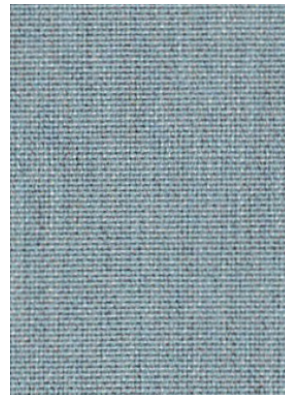
Sunbrella - Natté - Amber



Sunbrella - Natté - Flamingo



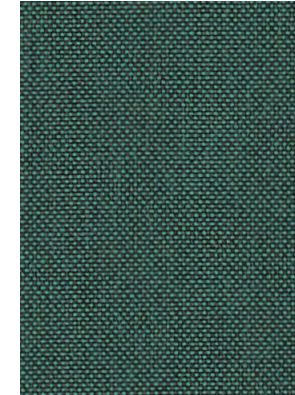
Sunbrella - Natté - Sooty



Sunbrella - Natté - Frosty Chiné



Sunbrella - Natté - Pistachio



Sunbrella - Natté - Ivy



Sunbrella - Natté - Carmine

**HALDANE**

## FINISHES

# Scatter Cushions

## Crevin Fiji (IMP)

Fiji (IMP) is a textured jacquard weave option for fully outdoor conditions as this beautiful and functional upholstery fabric collection can be spot cleaned allowing the easy removal of mildew. Crevin's Fiji (IMP) fabrics are finished with stain-repellence and with an internal layer of water resistant lamination.

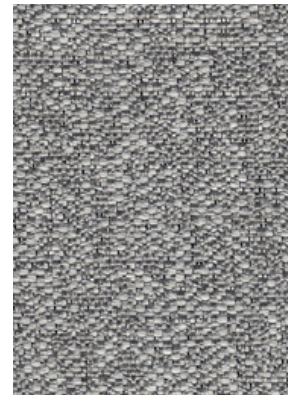
### CARE + MAINTENANCE

Brush off loose dirt. When necessary, spray on a cleaning solution of water and mild soap, use a soft bristle brush to clean. Allow cleaning solution to soak into fabric. Rinse thoroughly until all soap residue is removed. Air dry.

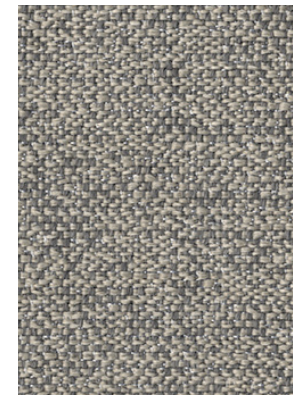
When leaving your furniture out in the elements make use of Weather Covers.



Crevin - Fiji IMP 07 - Snow



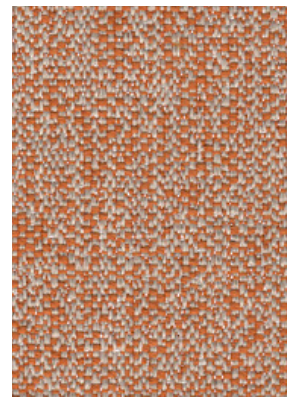
Crevin - Fiji IMP 51 - Granite



Crevin - Fiji IMP 75 - Avalanche



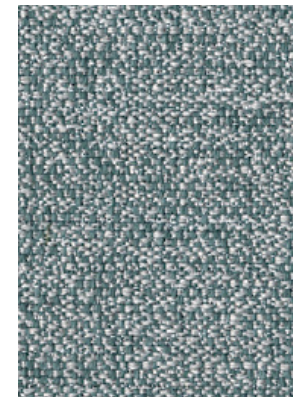
Crevin - Fiji IMP 83 - Graphite



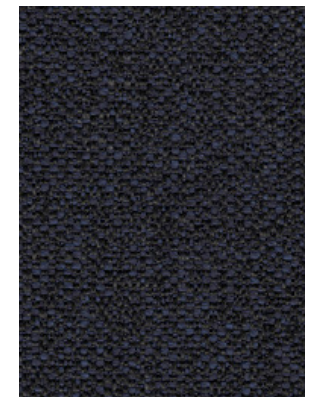
Crevin - Fiji IMP 29 - Citrus



Crevin - Fiji IMP 32 - Palm



Crevin - Fiji IMP 43 - Seaside



Crevin - Fiji IMP 47 - Midnight

FINISHES

# Scatter Cushions

## Sunbrella Zori

A more luxurious softer fabric ideal for use combined with a weather cover or on scatters. Zori offers subtle and sophisticated powdery iridescent hues as pastels are interwoven with neutral shades.

### CARE + MAINTENANCE

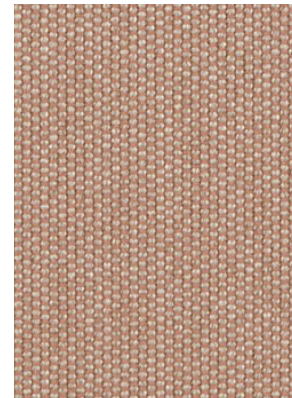
Sunbrella® 100% solution dyed acrylic is UV and Fade Resistant, Mold and Mildew Resistant and Bleach Cleanable.

Brush off loose dirt. When necessary, spot clean stains by spraying on a cleaning solution of water and mild soap, use a soft bristle brush to clean the area. Allow cleaning solution to soak into fabric. Rinse thoroughly until all soap residue is removed. Air dry on a washing line.

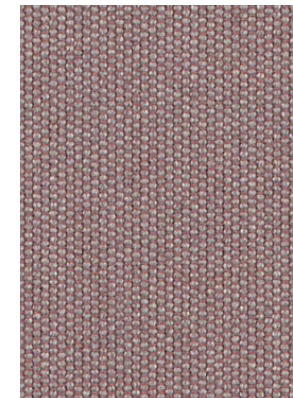
When leaving your furniture out in the elements , store undercover or make use of Weather Covers.



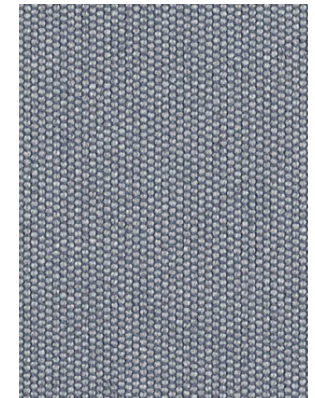
Sunbrella - Zori - Straw



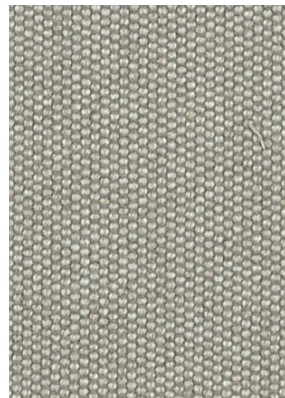
Sunbrella - Zori - Gari



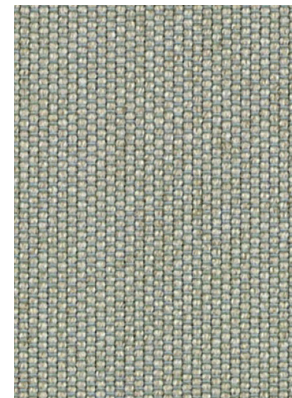
Sunbrella - Zori - Hibiscus



Sunbrella - Zori - Muse



Sunbrella - Zori - Matcha



Sunbrella - Zori - Sento

**HALDANE**

"Designing meaningful objects  
and spaces helps us understand  
ourselves and creates a sense of  
belonging to our time and place."

- HALDANE MARTIN



# Care + Maintenance

## 1. OUTDOOR STEEL POWDER COATING CARE

Care for your powder coated stainless steel & aluminium components by wiping when dirty with a damp cloth soaked in a solution of mild detergent (like Sunlight Liquid) and water. For coastal environments (within 200m of the ocean) it is necessary to make use of Marine Grade stainless steel SS316 and to wipe sea air condensation off of your furniture on a weekly basis. Avoid harsh chemical cleaning products and scratching with sharp objects as this can damage the powder coating.

## 2. OUTDOOR UPHOLSTERY FABRIC CARE

Care for your upholstery by regularly brushing off loose dirt with a soft brush. When dirty, spot clean using a soft bristle brush to scrub on a solution of water and mild soap. Allow the cleaning solution to soak into the fabric. Rinse thoroughly until all soap residue is removed and then air dry. Make use of weather covers when furniture is on uncovered patios or take removable upholstery indoors.

## 3. IROKO TIMBER CARE

For general cleaning, use a clean cloth to wipe down timber components with a solution of Rubio® Monocoat Exterior Soap and water. Allow the surface to dry.

For MAINTENANCE reapply Rubio® Monocoat Hybrid Wood protector every 6 to 12 months, depending on the level of exposure to the outdoor elements.

Clean as above with Rubio® Monocoat Exterior Soap. Rinse thoroughly until all the foam has disappeared.

Allow the surface to dry well (± 30 minutes at a temperature of 20 °C and proper ventilation).

Treat with the Rubio® Monocoat Hybrid Wood Protector in the same colour as your original application.

Apply the oil with a clean cloth. Allow a few minutes for the product to react. Remove any excess oil.

WARNING Cloths, saturated with oil, may spontaneously combust. Soak cloths in water after use before disposal.

## 4. DEKTON TABLE TOP CARE

Due to its practically zero porosity, the ultra-compact Dekton® surface is highly resistant to staining in day-to-day use and from chemical products, making it ideal for use as a table top for both inside and out.

For general cleaning, Cosentino recommends the use of Q-Action with a sponge or soft cloth. If this product is not available, the best option is to use a neutral soap (like Sunlight liquid) and water.

WARNING Do not mechanically polish the surface. Avoid using metal scouring pads. Whilst the table top material is incredibly durable, they can break when hit with heavy objects.



# Limited Warranty

HALDANE MARTIN DESIGN (PTY) LTD (Seller) offers a limited warranty on products sold by the Seller to the purchaser (Purchaser), covering defects in material and workmanship for a period of 3 years from the date of invoice, subject to terms, conditions and limitations described below.

1. Products sold directly from the showroom floor, acquired on Sale, in customers' own materials and Prototypes are excluded from this Limited Warranty.
2. Only the customer who originally purchased a new product from the Seller or its' authorized dealers may make claims under the Limited Warranty. The Limited Warranty does not extend to any subsequent buyer or other transferee.
3. The Seller will repair or replace any product(s) determined by the Seller to be defective within the applicable Warranty Period. The seller has the right at its' sole discretion to grant a refund for the affected product and to inspect any product claimed defective before making a final determination of the claim.
4. SELLERS LIABILITY IS LIMITED to the repair or replacement of any product determined by the Seller to be defective in accordance with the terms of this warranty.
5. DISCLAIMER OF LOSS The Seller shall not be liable for lost profits, replacement rental costs, other costs of repair or replacement, or any consequential, special, indirect or incidental damages to anyone, anything or any place resulting from any defects in material or workmanship.
6. IMPROPER CARE AND USE Our furniture requires cleaning and maintenance as stipulated above. The Seller will not repair or replace the furniture that has been abused, neglected, exposed to extreme humidity (relative humidity over 90%), extreme temperature (below -5°C or above 40° C), alterations to the product or unauthorized repair. The Seller will also not cover damage that results from normal wear and tear from use or the general passing of time (for example scratches, burns, watermarks, indentations, pilling, fading or wrinkling of fabric).
7. DIFFERENCES IN COLOUR Minor variations of colour and grain of timber elements or fabric(s) might occur from piece to piece. These variations do not constitute a defect in material and/or workmanship under this Limited Warranty and minor differences between our furniture and illustrations or images are not covered by this Limited Warranty.