



BELA+



BELA+

KISSA



BELA+

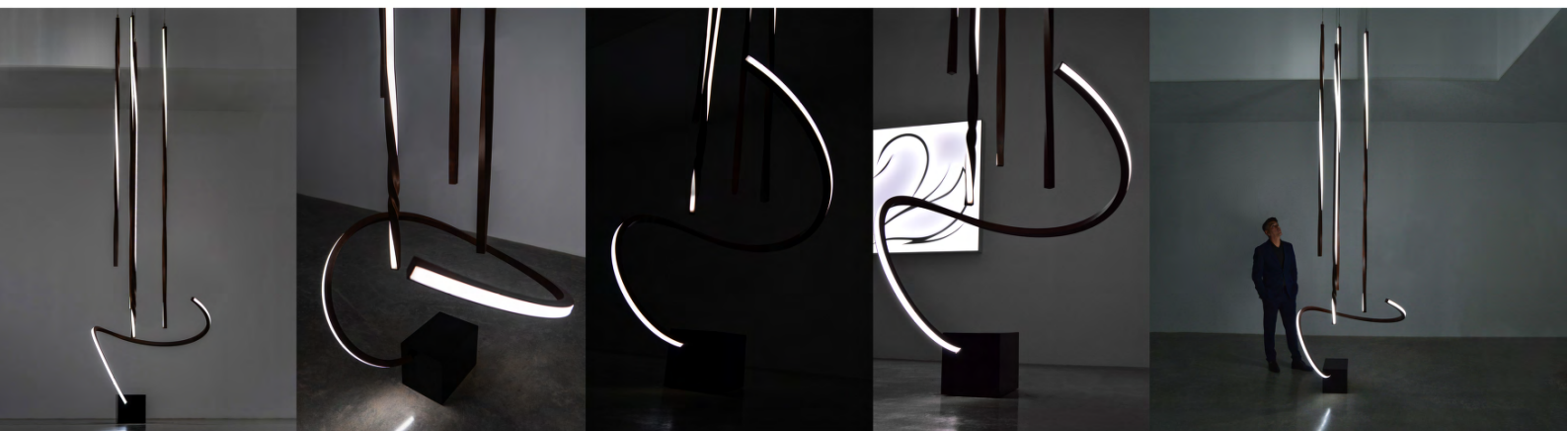
KISSA

BELA+



DIMENSIONES DIMENSIONS (mm)	POTENCIA POWER (W)	LUMINANCIA LUMEN (lm)	PESO WEIGHT (kg)	TEMP DE LUZ LIGHT TEMP (°K)
1000x1100x4400	245	23.500	18	2.800/3.000/4500/6.000 temperatura fija o dimable 2.800/3.000/4500/6.000 fixed temperature or dimmable

* Datos comunes para todas nuestras lamparas: DC 24V · IP 20 · Dimable * Common data for all our lamps: DC 24V - IP 20 - Dimmable



Los datos de esta ficha están elaborados con LED de 6000°K de temperatura. Los lúmenes de referencia son los valores de la instalación de la tira led. En el caso de Dual Color la potencia y lúmenes varían en función de la temperatura de color.

The data in this sheet are based on LEDs with a temperature of 6000°K. The reference lumens are the values of the LED strip installation. In the case of Dual Color the power and lumens may change depending on the colour temperature.

KISSA
ACABADOS & COLORES

KISSA

ANODIZADOS



KISSA

ANODIZADOS



NATURAL MATE

KSG054



NATURAL BRILLO

KSG554



INOX MATE

KSG042



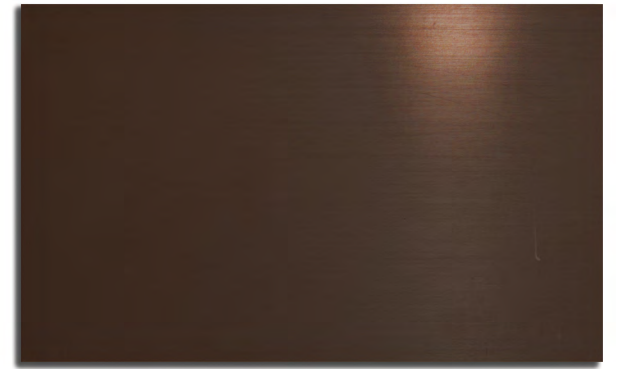
INOX BRILLO

KSG542



BRONCE MATE

KSG009



BRONCE BRILLO

KSG509



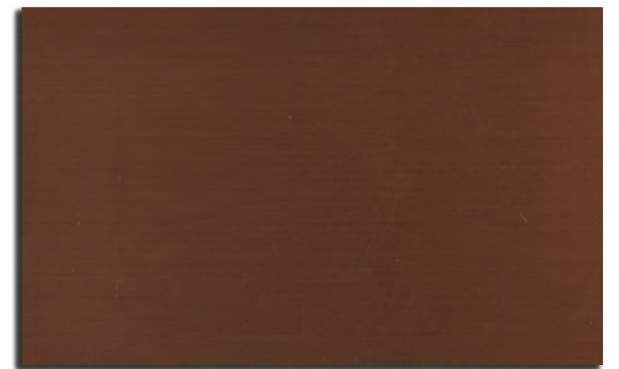
ORO MATE

KSG066



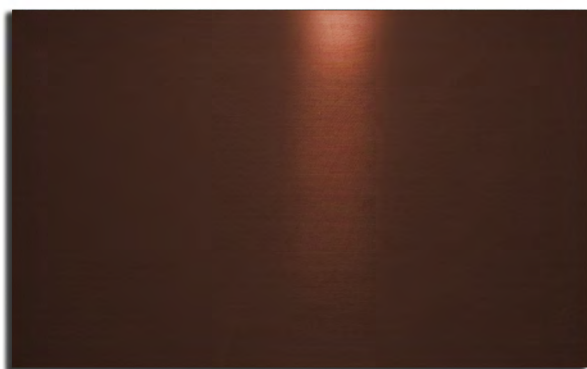
ORO BRILLO

KSG566



COBRE MATE

KSG020



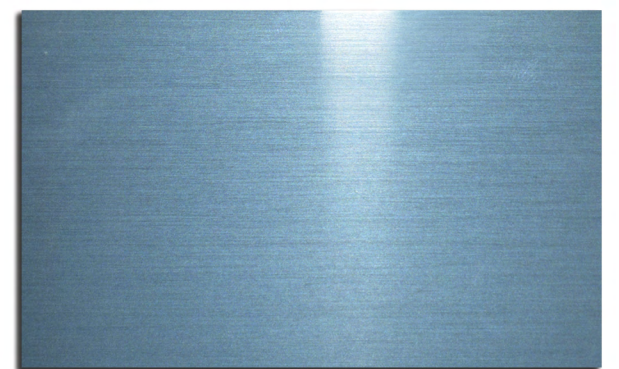
COBRE BRILLO

KSG520



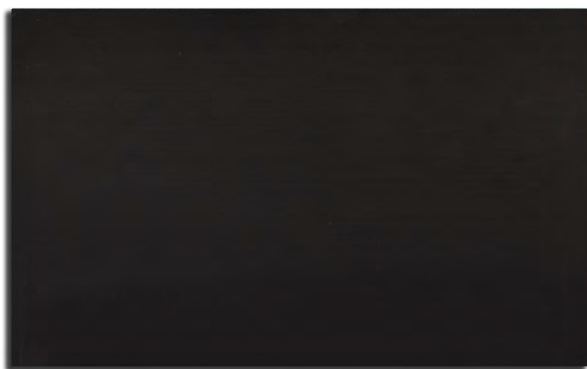
AZUL MATE

KSG003



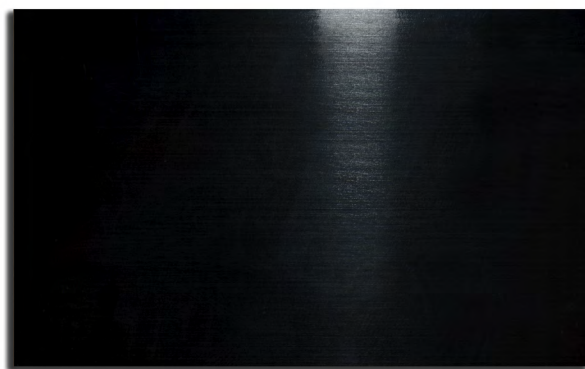
AZUL BRILLO

KSG503



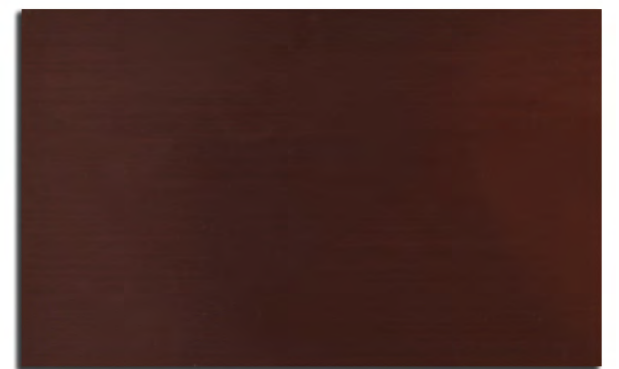
NEGRO MATE

KSG031



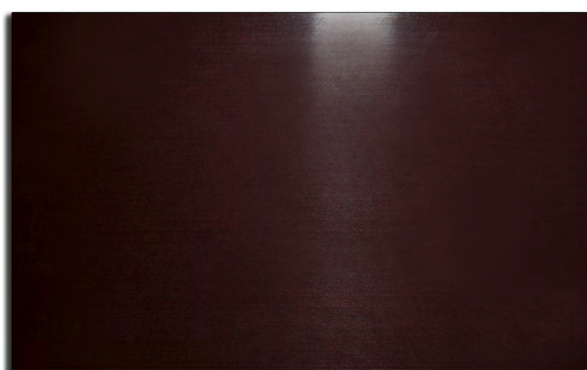
NEGRO BRILLO

KSG531



BURDEOS MATE

KSG078



BURDEOS BRILLO

KSG578

Los tonos de los acabados representados pueden variar en función del formato en el que lo esté observando (digital o impreso). Si desea evaluar el tono exacto puede solicitar unas muestras

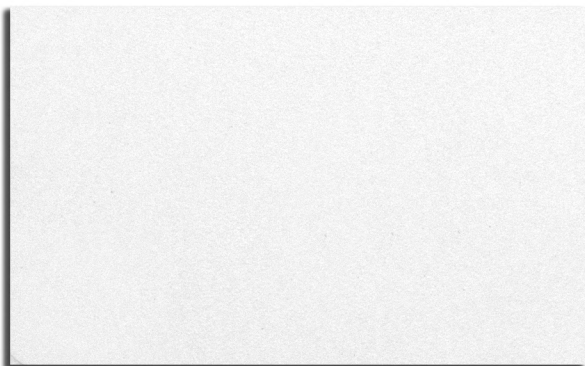
KISSA

TEXTURADOS CLASE 1



KISSA

TEXTURADOS CLASE 1



BLANCO

KTX9016



NEGRO

KTX9005



GRIS LUMINOSO

KTX7035



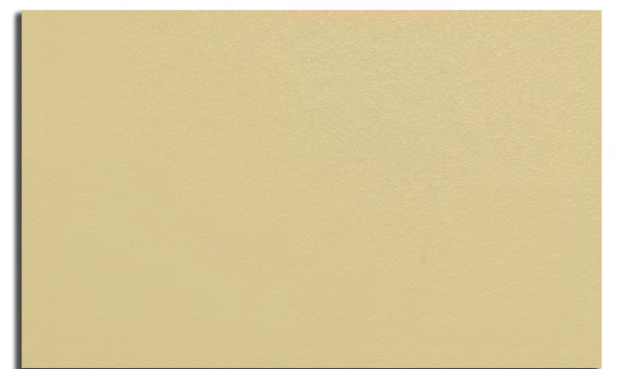
GRIS HIERRO

KTX7011



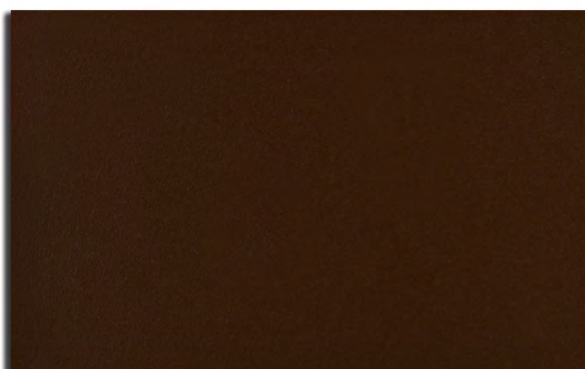
GRIS GRAFITO

KTX7024



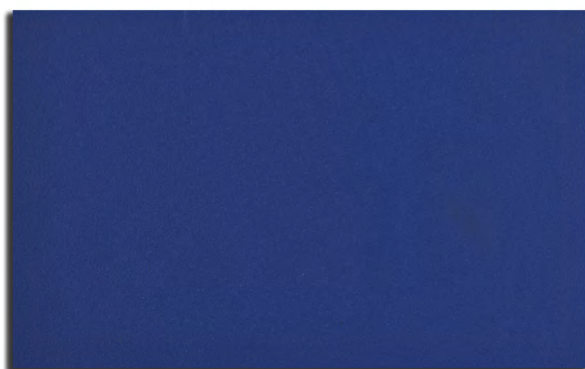
MARFIL CLARO

KTX1015



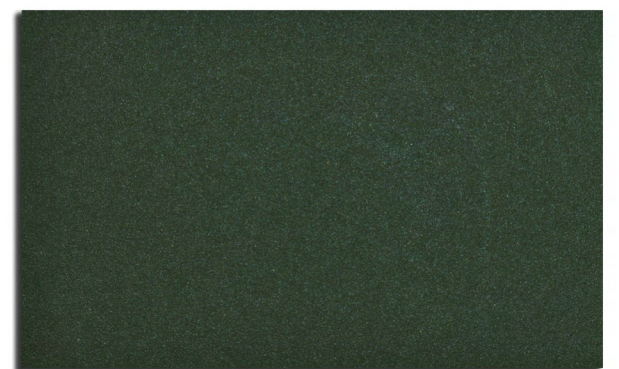
ROJO VINO

KTX3005



AZUL GENCIANA

KTX5010



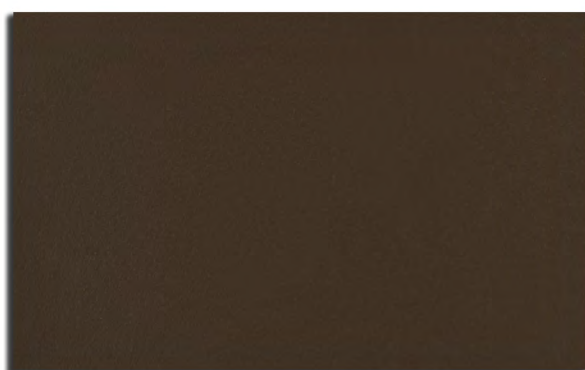
VERDE MUSGO

KTX6005



VERDE ABETO

KTX6009



SEPIA

KTX8014

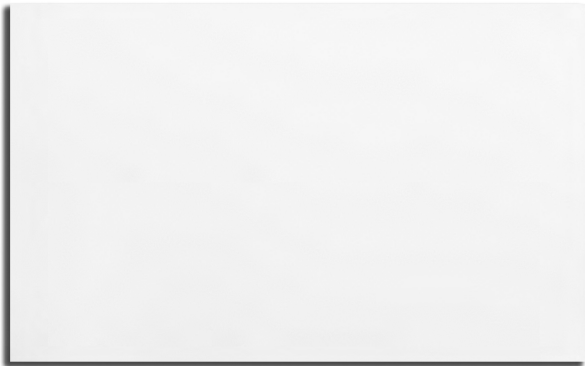
KISSA

MATES CLASE 1

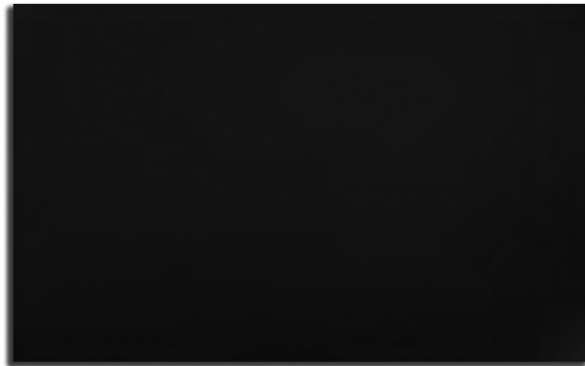


KISSA

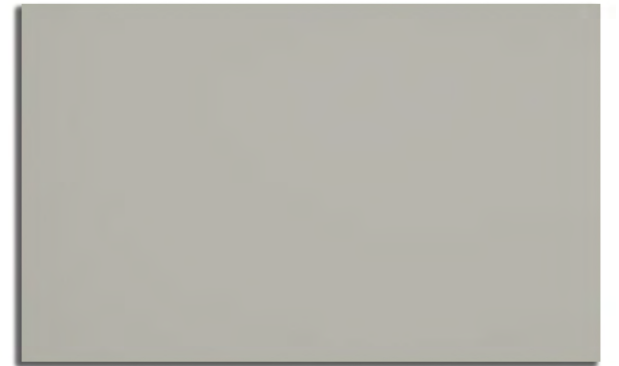
MATES CLASE 1



BLANCO KM9016



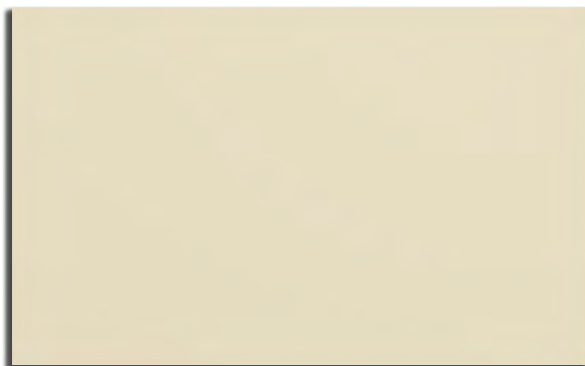
NEGRO KM9005



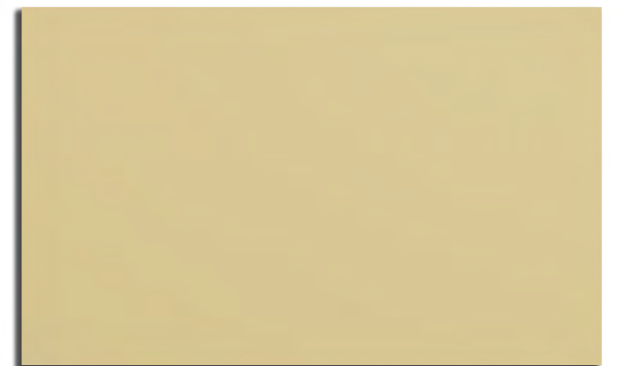
GRIS LUMINOSO KM7035



GRIS GRAFITO KM7024



BLANCO PERLA KM1013



MARFIL CLARO KM1015



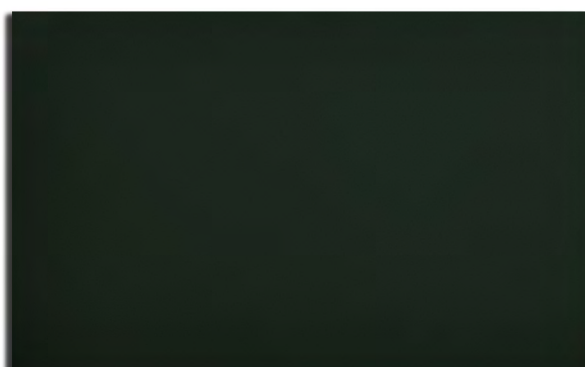
ROJO VINO KM3005



AZUL GENCIANA KM5010



VERDE MUSGO KM6005



VERDE ABETO KM6009

KISSA

FOLIADOS

Maderas Naturales



KISSA

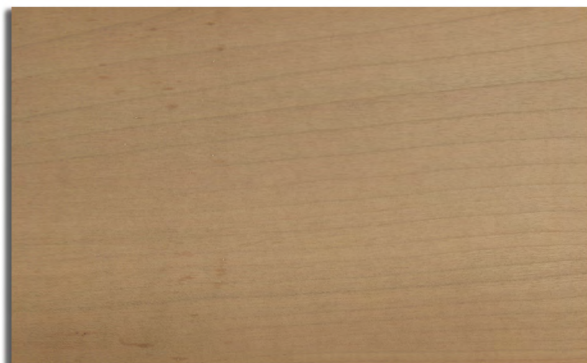
FOLIADOS

Maderas Naturales



HAYA BLANCA

KFMHB



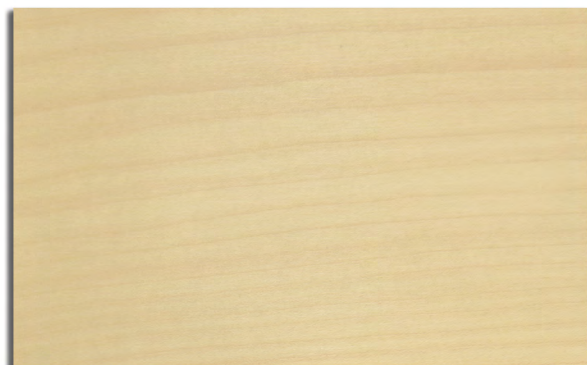
CEREZO

KFM CZ



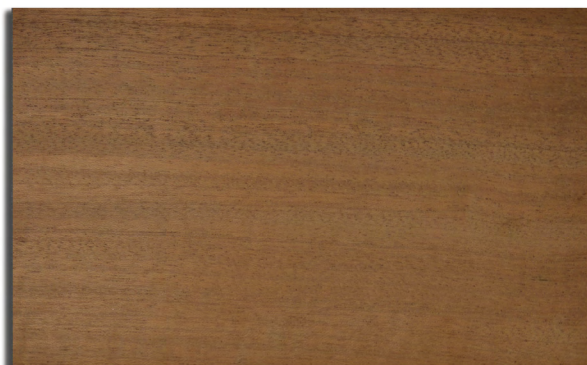
WENGUÉ

KFMW



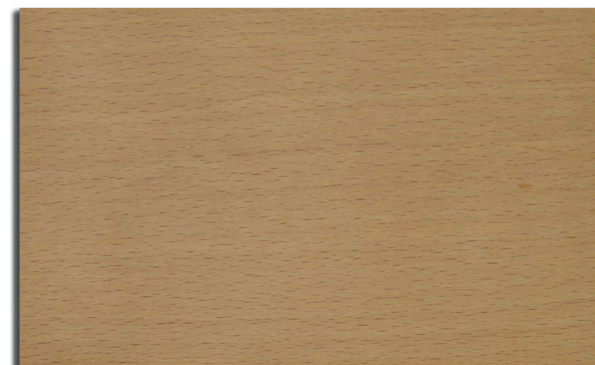
ARCE

KFM AP



SAPELLY

KFM SY



HAYA VAPORIZADA

KFMHV



ROBLE

KMFR



MUKALY

KFM MY



PINO GALLEGO

KMFPG

KISSA

FOLIADOS **PVC** EXTERIOR



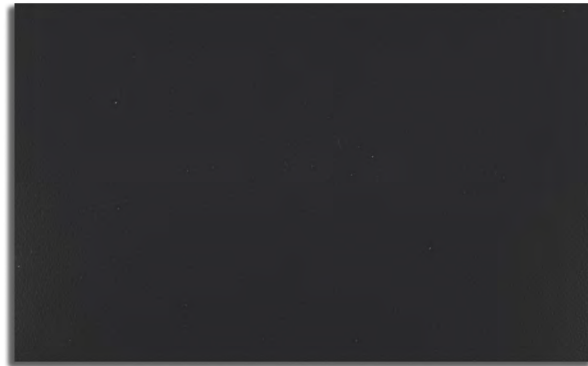
KISSA

FOLIADOS PVC EXTERIOR



PLATA

KFEPL



ANTRACITA

KFEA



ANTRACITA TEXTURADO

KFEAT



EMBERO

KFEE



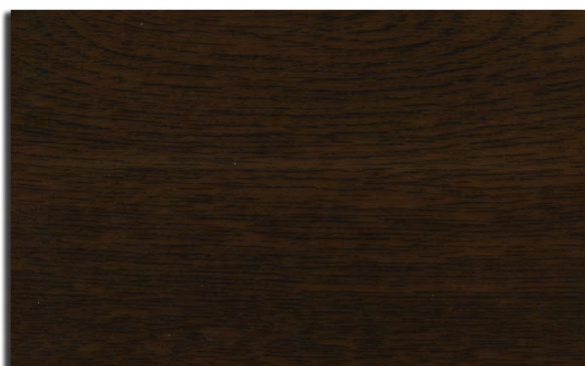
MAHAGONY

KFEM



NOGAL CLARO

KFENC



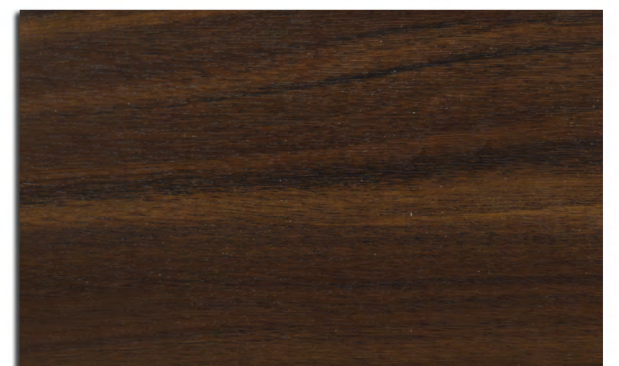
NOGAL OSCURO

KFENO



WINCHESTER

KFEW



NIGRA

KFENI



ANTEAK

KFEAK

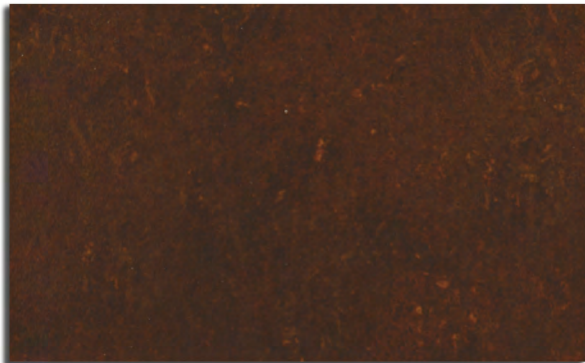
KISSA

SUBLIMADOS



KISSA

SUBLIMADOS



OXIDO

KSBTO-0X



NOGAL

KSMT0



NORDICA

KSBTB600



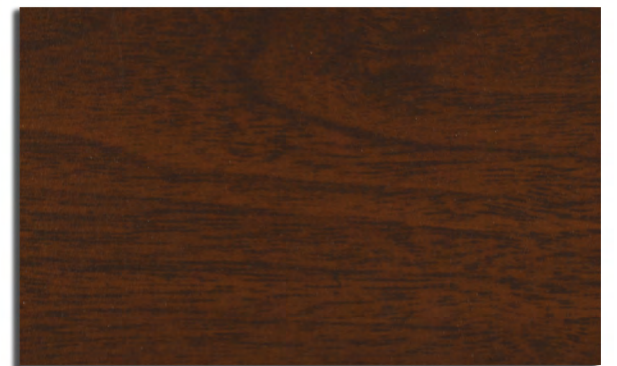
MADERA BLANCA

KSBTB400



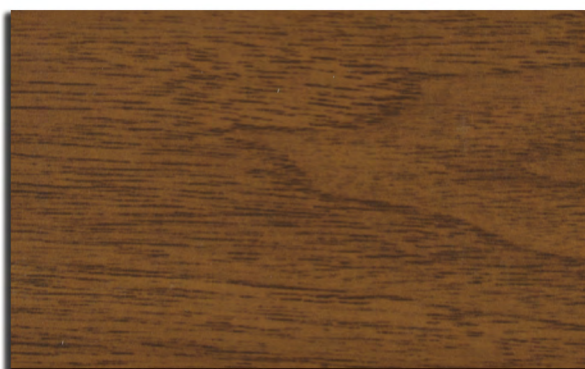
TEKA TEXTURADO

KSBTO-9



SAPELY CAOBA TEXTURADO

KSBTO-12



GOLDEN

KSFTO190



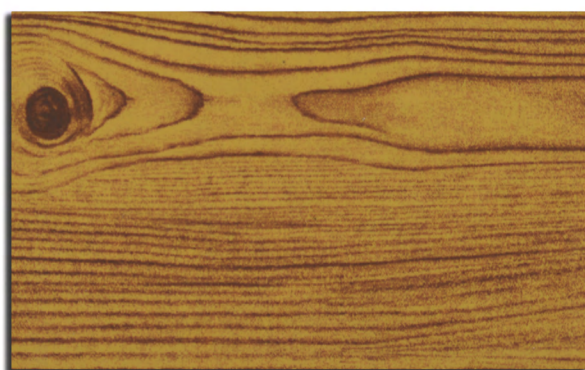
ROBLE OSCURO

KSBO-5



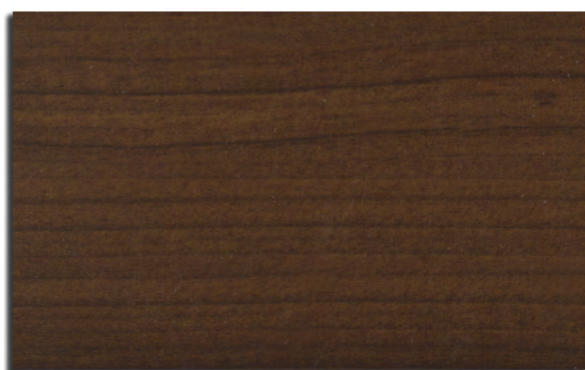
HIVORY

KSBC-12



PINO CANADIENSE

KSBC-9



CEREZO CATEDRALES

KSBO-7



ACACIA

KSBO-10

Especificaciones especiales **ACABADOS KISSA**

Consultar pedido mínimo o costes especiales por no llegar al mínimo :

- Foliado **MADERA NATURAL**
- Foliado **PVC exterior**
- **SUBLIMADOS ESPECIALES** (patrones, imágenes o motivos propios) incluso es posible reproducir imágenes de acabados aportadas por cliente (mínimo de calidad 300dpi).
- **METALIZADOS** o colores especiales de cualquier catálogo.
- Cualquier **RAL** del mercado incluso los **TEXTURADOS**
- Pintura **ADAPTA** que cambia de color en función de la luz que recibe.
- Pintura **ALTA DURABILIDAD** 25 años clase 2
- Para zonas de condiciones adversas respecto a la corrosión, disponemos de espesores de micras **ESPECIALES**

