



# loom

**W Stainwall®**



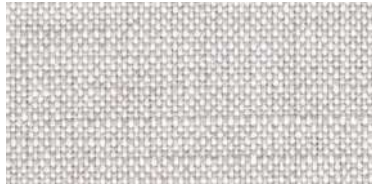
# loom



loom | 01



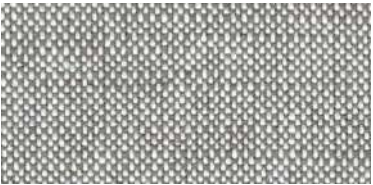
loom | 02



loom | 03



loom | 04



loom | 05



loom | 11



loom | 13



loom | 14



loom | 21

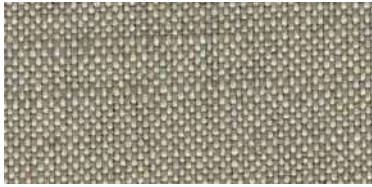


loom | 22

# loom



loom | 23



loom | 26



loom | 07



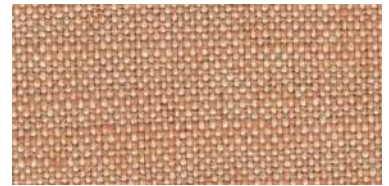
loom | 10



loom | 24



loom | 25



loom | 28



# loom

MADE IN  
BARCELONA



**ROIG**  
70 ANYS

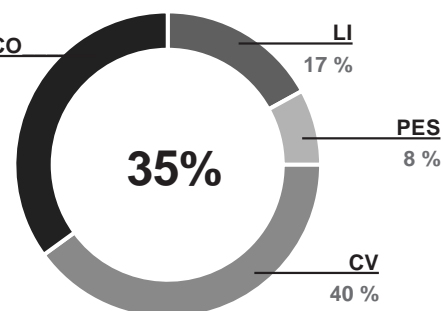
**DABEDAN**  
TEJIDOS IGNÍFUGOS

**ROIG**  
original fabrics  
by DABEDAN

<b>Composition</b> <b>Composició</b>	35 % Recycled Cotton 40 % Viscose 17 % Linen 8 % Polyester
<b>Weight</b> <b>Peso</b>	550 g/lm - 395 g/m2 ± 5%
<b>Width</b> <b>Ancho</b>	140 cm (±2%)
<b>Roll length</b> <b>Longitud pieza</b>	± 35 m
<b>Pilling</b>	5 (A) EN ISO 12945-2:2020 SCALE A-D; A, best value
<b>Abrasion Resistance</b> <b>Resistencia a la abrasión</b>	500.000 Cycles (A) Change of appearance 30000 c: 5 EN ISO 12947-2:1998/AC:2006 SCALE A-C; A, best value
<b>Seam slippage resistance</b> <b>Resistencia a las costuras</b>	Warp: 2,10 mm Weft: 3,10 mm (A) EN ISO 13936-2:2004 SCALE A-D; A, best value
<b>Breaking strenght</b> <b>Resistencia a la tracción</b>	Warp: 750 N Weft: 1100 N (A) EN ISO 13934-1:2013 SCALE A-D; A, best value
<b>Dimensional stability</b> <b>washing machine (30°C)</b> <b>Estabilidad dimensional</b> <b>al lavado doméstico (30°C)</b>	Warp: 3 % (±3%) Weft: 3 % (±3%)
<b>Upholstery classification</b> <b>Clasificación tapicería</b>	(A) EN 14465:2003/A1:2006 SCALE A-D; A, best value
<b>Fire reaction certification</b> <b>Certificado reacción al fuego</b>	EN 1021 Part 1 and 2



**RECYCLED CO**  
35 %



Stain resistance  
Antimanchas



Washing Instructions  
Instrucciones de lavado

All our fabrics are designed and produced in our factory. Todos nuestros tejidos están diseñados y producidos en nuestra fábrica.