

ALDECO

VOVA  
*Collection*

# veva

*Collection*

[WWW.ALDECO.PT](http://WWW.ALDECO.PT)



VEVA, this collection takes us on a passionate journey inspired by an unusually surprising Portuguese woman, a great lady of her time who broke standards and challenged taboos like no one else in that “well-behaved” Portugal, that lived, astonished, with Veva’s fascinating personality. An eccentric woman who walks her leopard on a leash through the streets of Lisbon in the 1920s, organizes exuberant parties at her house in the capital, travels alone around the world, hunts in Africa and lives with the high European aristocracy or even the British Royal Family. Married to an influential man and twice ambassador in London, she is also a novelist and playwright, an intellectual who publishes opinion articles on sociology and international politics. She likes to tease and embarrass Salazar. Feminine, irreverent, modernist, this is how we define VEVA, the intrepid and fascinating writer who defied the constraints imposed by Portuguese society during the 20<sup>th</sup> century dictatorship. A feminist far ahead of her time, with an exuberant and

enigmatic personality passionate about Theatre and Art. We pay tribute to a woman who saw herself as a swan and a butterfly, elegant and capable of reinventing herself. The VEVA collection reflects this same scenographic theatricality and boldness, creatively exploring the decorative elements of the golden period of Art Deco and the metamorphosis of motifs, the richness of materials and the eclecticism of different cultures, the result of travels to different continents and contact with various ethnicities, modern artists and reformist thoughts. We dive into a new sensitivity with warm and natural tones, through a deep respect for materials and the exaltation of nature and the environment, a sensitivity associated with touch, the discovery of sensations and spirituality. We weave and embroider these stories together, building connections and preserving the richness of a cultural identity that is intended to be timeless. Come with us and let yourself be seduced by the sensuality of VEVA.



This collection is a tribute to our inspiring muse Veva de Lima.  
A Woman who approached life as if she lived in a stage!  
Truly fascinating and original!

*Susana Dias*  
Brand & Creative Director  
Susana Dias

VEVA, esta colección nos lleva a un viaje apasionante inspirado en una portuguesa inusualmente sorprendente, una gran dama de su tiempo que rompió estándares y desafió tabúes como nadie en ese Portugal bien educado que vivía asombrado con la fascinante personalidad de Veva.

Una mujer excéntrica que pasea a su leopardo con correa por las calles de la Lisboa de los años 20, organiza fiestas exuberantes en su casa de la capital, viaja sola por el mundo, persigue caza mayor en África y baila con la alta aristocracia europea, incluso con la familia real británica. Casada con un hombre influyente y dos veces embajador en Londres, es también novelista y dramaturga, una intelectual que publica artículos de opinión sobre sociología y política internacional. Le gusta provocar y avergonzar a Salazar.

Femenina, irreverente, modernista, así definimos a VEVA, la intrépida y fascinante escritora que desafió las limitaciones impuestas por la sociedad portuguesa durante la dictadura del siglo XX. Una feminista adelantada a su tiempo, con una personalidad exuberante y enigmática

apasionada por el Teatro y el Arte. Rendimos homenaje a una mujer que se veía a sí misma como un cisne y una mariposa, elegante y capaz de reinventarse.

La colección VEVA refleja esta misma teatralidad y audacia escenográfica, explorando creativamente los elementos decorativos de la época dorada del Art Déco y la metamorfosis de los motivos, la riqueza de materiales y el eclecticismo de diferentes culturas, resultado de viajes a diferentes continentes y contacto con diversas etnias, artistas modernos y pensamientos reformistas. Nos adentramos en una nueva sensibilidad con tonos cálidos y naturales, a través del profundo respeto por los materiales y la exaltación de la naturaleza y el medio ambiente, una sensibilidad asociada al tacto, la exploración de las sensaciones y de la espiritualidad.

Tejemos y bordamos estas historias juntos, construyendo conexiones y preservando el patrimonio de una identidad cultural que pretende ser atemporal.

Ven con nosotros y déjate seducir por la sensualidad de VEVA.

VEVA, cette collection nous emmène dans un voyage passionné inspiré par une Portugaise inhabituellement surprenante, une grande dame de son temps qui a brisé les normes et défié les tabous comme personne dans un Portugal sage qui a vécu, étonné, avec la personnalité fascinante de Veva.

Une femme excentrique qui promène son léopard en laisse dans les rues de Lisbonne dans les années 1920, organise des fêtes exubérantes dans sa maison de la capitale, voyage seule à travers le monde, chasse le gros gibier en Afrique et vit avec la haute aristocratie européenne ou même la famille royale britannique. Mariée à un homme influent, deux fois ambassadeur à Londres, Veva est également romancière et dramaturge, intellectuelle qui publie des articles d'opinion sur la sociologie et la politique internationale. Veva aime provoquer et embarrasser Salazar.

Féminine, irrévérencieuse et moderniste, c'est ainsi que nous définissons VEVA, l'écrivaine intrépide et fascinant qui a défié les contraintes imposées par la société portugaise pendant la dictature du XX<sup>e</sup> siècle. Une féministe très en avance sur son temps, avec une

personnalité exubérante et énigmatique, passionnée de Théâtre et d'art. Nous rendons hommage à une femme qui se voyait comme un cygne et un papillon, élégante et capable de se réinventer.

La collection VEVA reflète cette même théâtralité et audace scénographique, explorant de manière créative les éléments décoratifs de la période dorée de l'Art Déco et la métamorphose des motifs, la richesse des matériaux et l'éclectisme des différentes cultures, résultat de voyages vers différents continents et de contacts avec diverses ethnies, artistes modernes et pensées réformistes. Nous plongeons dans une nouvelle sensibilité aux tons chauds et naturels dans un profond respect des matériaux et de l'exaltation de la nature et de l'environnement. Il s'agit d'une sensibilité associée au toucher, à l'exploration de la sensation et à la spiritualité.

Nous tissons et brodons ces histoires ensemble, établissant des liens et préservant la richesse d'une identité culturelle qui se veut intemporelle.

Rejoignez-nous et laissez-vous séduire par la sensualité de VEVA.



VEVA, esta coleção conduz-nos por uma viagem apaixonante inspirada numa mulher portuguesa invulgarmente surpreendente, uma grande senhora do seu tempo que quebrou padrões e desafiou tabus como ninguém nesse Portugal bem-comportado que conviveu, estupefacto, com a personalidade fascinante de Veva. Uma mulher excêntrica que passeia o seu leopardo à trela pelas ruas de Lisboa dos anos de 1920, organiza festas exuberantes na sua casa da capital, viaja sozinha pelo mundo, persegue caça grossa em África e convive com a alta aristocracia europeia ou até mesmo a família real britânica. Casada com um homem influente e por duas vezes embaixador em Londres, é também novelista e dramaturga, uma intelectual que publica artigos de opinião sobre sociologia e política internacional. Gosta de provocar e embaraçar Salazar. Feminina, irreverente, modernista, é assim que definimos VEVA, a intrépida e fascinante escritora que desafiou os constrangimentos impostos pela sociedade portuguesa durante a ditadura do século XX. Uma feminista muito à frente do seu tempo, com uma personalidade exuberante e enigmática apaixonada por Teatro e Arte. Prestamos

tributo a uma mulher que se via como um cisne e uma borboleta, elegante e capaz de se reinventar.

A coleção VEVA reflete essa mesma teatralidade cenográfica e ousadia, explorando criativamente os elementos decorativos do período áureo da Art Déco e a metamorfose dos motivos, a riqueza dos materiais e o ecletismo de diferentes culturas, fruto de viagens por diferentes continentes e do contacto com várias etnias, artistas modernos e pensamentos reformistas. Mergulhamos numa nova sensibilidade com tons quentes e naturais, através do profundo respeito pelos materiais e da exaltação da natureza e do meio ambiente, sensibilidade esta, associada ao toque, à exploração da sensação e da espiritualidade.

Tecemos e bordamos em conjunto essas histórias construindo conexões e preservando a riqueza de uma identidade cultural que se quer intemporal.

Venha connosco e deixe-se seduzir pela sensualidade de VEVA.





## SAVOIR-FAIRE

SAVOIR-FAIRE is a luxurious Art Déco design embroidered fabric, adorned in rich tones through intricate decorative embroidery stitches. Crafted on an elegant cotton satin fabric, it's the epitome of luxury elevating each space with this regal touch. This fabric symbolizes the true concept of savoir-faire in all spheres of Veva's glamorous life.



[1]  
**MÉRIDIENNE**  
Col. 05 Cognac

[2]  
**SAVOIR-FAIRE**  
Col. 02 Maxims Doré

## ENSEMBLES VELVET

ENSEMBLES VELVET is a beautiful cotton and linen velvet with a high, soft pile. This fabric was specially developed to combine with FRISSON VELVET and BELLE ÉPOQUE VELVET jacquard velvets and is suitable for upholstery, decoration, and curtains due to its high resistance to abrasion and light. This smooth, soft velvet is available in 7 exquisite colours.

[1]  
FRISSON VELVET  
Col. 03 Cognac

[2]  
ENSEMBLES VELVET  
Col. 03 Cognac

[3]  
MÉRIDIENNE  
Col. 05 Cognac

[4]  
SAVOIR-FAIRE  
Col. 03 Golden Era

[5]  
FANTAISIE  
Col. 02 Maxims Doré





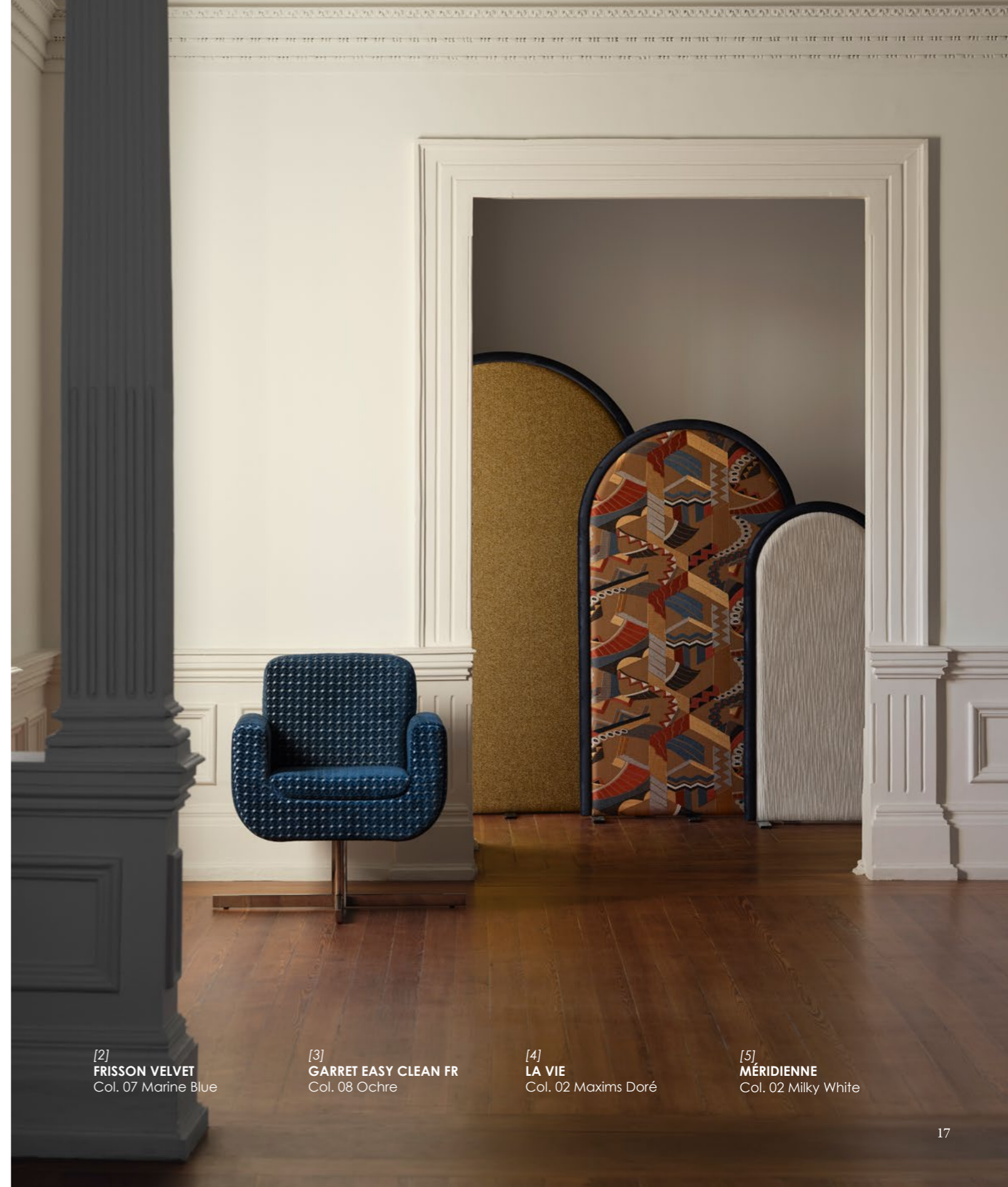
[1]  
FANTAISIE  
Col. 02 Maxims Doré







[1]  
**FRISSON VELVET**  
Col. 07 Marine Blue



[2]  
**FRISSON VELVET**  
Col. 07 Marine Blue

[3]  
**GARRET EASY CLEAN FR**  
Col. 08 Ochre

[4]  
**LA VIE**  
Col. 02 Maxims Doré

[5]  
**MÉRIDIENNE**  
Col. 02 Milky White

“In the morning you are an atom-satellite of the cosmos and at night you are a solar fulcrum that attracts and shines light.”

Antero de Quental in  
LEITÃO DE BARROS, Joana. VEVA, ed. Lisboa: Oficina do Livro, 2022.

## MÉRIDIENNE

MÉRIDIENNE is a very elegant but very natural piece dyed chenille. This fabric has a very soft lined structure with a timeless *côtelé* look and is available in 12 exquisite colours.

[1]  
**MÉRIDIENNE**  
Col. 12 Ink Blue

“ Le matin, vous êtes un atomo-satellite du cosmos et la nuit, vous êtes un point d'appui solaire qui attire et fait briller la lumière.”  
“Por la mañana eres un átomo-satélite del cosmos y por la noche eres un punto de apoyo solar que atrae e irradia luz.”  
“De manhã és atomo-satélite do cosmos e à noite és fulcro solar que atrai e espadana luz.”



## CHRONIQUES DE VOYAGE

CHRONIQUES DE VOYAGE is a beautiful and stylised foliage embroidered fabric that celebrates form and colour. This special cotton ground fabric has voluminous stitches making the surface of this all over design an impressive one with a handmade feel. Inspired by Veva's adventurous travel chronicles through bucolic fields with vegetation in warm and natural tones.

## HAUT DÉSERT

HAUT DÉSERT is a satin jacquard fabric that represents a dynamic and harmonious rhythm almost like a musical score. Its geometric graphic elements inspired by the repetition of the triangle represents the connection to the land in a moment of continuous ancestral creation. The pyramid motif is very present in this fabric, invoking the Egyptian travels, contrasting with the elegance of satin as a noble material. It is available in 6 very natural shades.

[1]  
**CHRONIQUES DE VOYAGE**  
Col. 02 Spring Earth

[2]  
**HAUT DÉSERT**  
Col. 06 Blue Universe





[1]  
**HAUT DÉSSERT**  
Col. 06 Blue Universe



[2]  
**CHRONIQUES DE VOYAGE**  
Col. 02 Spring Earth

## VOLUPTÉ DE LA VIE

VOLUPTÉ DE LA VIE is a delicate sheer with a linen look and an all-over design of finely embroidered stylized flowers. This light, transparent fabric has a wonderful drape for curtains. The elegant look is enhanced by the soft shine of the delicate, large-scale embroidered floral motifs. This rich embroidered fabric exalts the feminine in an intense and refined way, creating extremely pleasant sensations.

[1]  
**MÉRIDienne**  
Col. 01 Natural White

[2]  
**VOLUPTÉ DE LA VIE**  
Col. 01 Natural White





[1]  
**MÉRIDIENNE**  
Col. 01 Natural White



[2]  
**VOLUPTÉ DE LA VIE**  
Col. 01 Natural White



[1]  
LA VIE  
Col. 01 Retro Light

## VOYAGEUR

VOYAGEUR is a piece dyed jacquard fabric with an irregular serpentine texture functioning as a faux plain and double face. This fabric is ideal for adding that touch of irreverence to your upholstery pieces and is available in very natural colours.



[2]  
VOYAGEUR  
Col. 02 Sand





“Party, dream, spectacle, grandeur.”

“Fiesta, sueño, espectáculo, grandeza.”

“Fête, rêve, spectacle, grandeur.”

“Festa, sonho, espetáculo, grandiosidade.”

Veva de Lima in

LEITÃO DE BARROS, Joana. Veva. ed. Lisboa: Oficina do Livro, 2022.



[1]  
**MÉRIDIENNE**  
Col. 03 Linen

[2]  
**LA VIE**  
Col. 01 Retro Light

[3]  
**HAUT DÉSSERT**  
Col. 02 Greige

[4]  
**VOYAGEUR**  
Col. 02 Sand

[5]  
**TAILLEUR**  
Col. 02 Greige



[1]  
TAILLEUR  
Col. 02 Greige



[2]  
MÉRIDIENNE  
Col. 03 Linen

## LA VIE

LA VIE is an exquisite embroidery with an abstract ethnic design that comes to life through multi-coloured minimalist shapes and intricate stitches on a soft linen ground. This fabric is inspired by experiences from different travels and cultures with the combination of abstract motifs resulting from the deconstruction of Veva's most beloved elements: the Butterfly and the Swan. The rich textures combined with the geometry of the shapes result in an elegant design symbolizing metamorphosis and elegance; It is perfect for modern and contemporary interior spaces.

[1]  
**LA VIE**  
Col. 03 Golden Era





[1]  
LA VIE  
Col. 03 Golden Era



## INFLUENCE

INFLUENCE is an embroidered fabric with a lined look that combines different embroidered stitches with the bouclé, giving it a huge three-dimensionality. Its sheer and light ground contrasts with the geometric shapes of the embroidery, creating a balanced rhythm between the delicate and the frantic of the shapes like Veva's life in the influential social circles that brought together the philosophers and modernist thinkers' crème de la crème.

## TAILLEUR

TAILLEUR is a jacquard with multi-coloured bouclé yarns, which gives it a very elegant and natural look like the famous tweed tailored suits from the beginning of the 20th century. This fabric with a modern twist and is extremely soft is available in 6 must-have colours.

[1]  
**INFLUENCE**  
Col. 01 Natural White

[2]  
**TAILLEUR**  
Col. 01 White Sand





[1]  
**INFLUENCE**  
Col. 01 Natural White



[2]  
**TAILLEUR**  
Col. 01 White Sand

## BELLE ÉPOQUE VELVET

BELLE ÉPOQUE VELVET is a jacquard velvet fabric with cotton and linen pile. This velvet has a geometric design inspired by the golden age with the curved shapes typical of the Art Déco period. The cut-pile technique combined with piece dyeing process accentuates its dynamism and glamour, so characteristic of this era. This exquisite velvet can be easily combined with the FRISSON VELVET micro design and ENSEMBLES smooth plain velvet and is available in 7 wonderful colours.

## FRISSON VELVET

FRISSON VELVET is a jacquard velvet fabric with cotton and linen pile. This velvet has a dynamic geometric micro motif inspired by parties and gatherings from the beginning of the 20<sup>th</sup> century, full of frenetic rhythm, theatrical representations, and poetry. The buzz is evident in the cut-pile and three-dimensionality of this piece dyed irresistible velvet. This velvet with a textured and irreverent look due to its use of color is available in 7 glamorous shades.

[1]  
**BELLE ÉPOQUE VELVET**  
Col. 01 White Cotton

[2]  
**FRISSON VELVET**  
Col. 01 White Cotton





[1]  
**BELLE ÉPOQUE VELVET**  
Col. 01 White Cotton



[2]  
**FRISSON VELVET**  
Col. 01 White Cotton





[1]  
**HAUT DÉSSERT**  
Col. 03 Terracotta Hues

[2]  
**HAUT DÉSSERT**  
Col. 04 Chocolate Mix



[3]  
**HAUT DÉSSERT**  
Col. 03 Terracotta Hues

[4]  
**HAUT DÉSSERT**  
Col. 04 Chocolate Mix

[5]  
**CHRONIQUES DE VOYAGE**  
Col. 01 Autumn Dream



[1]  
**CHRONIQUES DE VOYAGE**  
Col. 01 Autumn Dream



[2]  
**HAUT DÉSSERT**  
Col. 03 Terracotta Hues

## TWEEDY

TWEEDY is a 100% recycled fabric with a very structured effect, specially designed for upholstery and with a high martindale resistance. It has a slightly melange effect in some of the tones colourways and is available in 14 refined colour shades. It has a luxurious look and soft feel while respecting the environment.



[1]  
TWEEDY  
Col. 03 Ecrú

## FANTAISIE

FANTAISIE is a cotton satin fabric with a contemporary twist on the graphic element of the damask. This luxurious embroidered cotton fabric focuses on a harmonious mix of tradition and modernity, as it has a modern aesthetic, subtly and metaphorically exalting the feminine and timelessness.

[1]  
**TAILLEUR**  
Col. 03 Terracotta Hues

[2]  
**FANTAISIE**  
Col. 01 Retro Light





[1]  
**TAILLEUR**  
Col. 03 Terracotta Hues



[2]  
**FANTAISIE**  
Col. 01 Retro Light

# VEVA

Collection

"I cannot tremble, I do not want to deceive, I do not deign to weaken."  
 "No puedo temblar, no quiero engañar, no me digno a debilitarme."  
 "Não posso tremer, não quero enganar, não me digno a enfraquecer."

"tremblar ne peux, tromper ne veux, flâchir ne daigne."

Veva de Lima in

LEITÃO DE BARROS, Joana. VEVA. ed. Lisboa: Oficina do Livro, 2022.

## BELLE ÉPOQUE VELVET

L. 140 cm

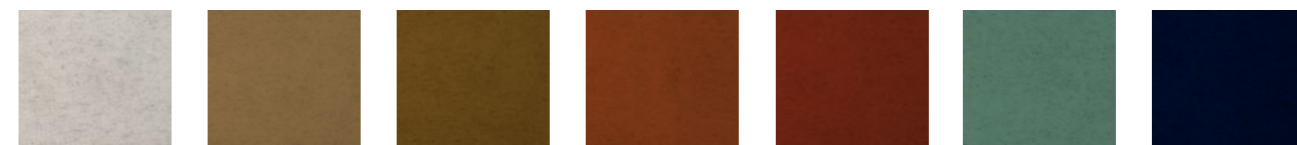


Col. 01 White Cotton T192890001  
 Col. 02 Twill Taupe T192890002  
 Col. 03 Cognac T192890003  
 Col. 04 Terracotta T192890004  
 Col. 05 Burgundy Wine T192890005  
 Col. 06 Sage Green T192890006  
 Col. 07 Marine Blue T192890007

COMPOSITION: PILE: 55% CO + 45% LI | WEIGHT: 640 g/ml | PILLING: 4/5 | LIGHTFASTNESS: 5 | MARTINDALE: 45.000 CC | RAPPORT: H35 x V26 cm.

## ENSEMBLES VELVET

L. 140 cm

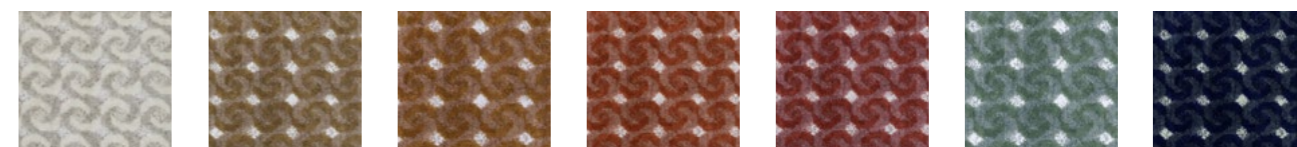


Col. 01 White Cotton T192880001  
 Col. 02 Twill Taupe T192880002  
 Col. 03 Cognac T192880003  
 Col. 04 Terracotta T192880004  
 Col. 05 Burgundy Wine T192880005  
 Col. 06 Sage Green T192880006  
 Col. 07 Marine Blue T192880007

COMPOSITION: PILE: 50% CO + 50% LI | WEIGHT: 590 g/ml | PILLING: 5 | LIGHTFASTNESS: 5 | MARTINDALE: 45.000 CC.

## FRISSON VELVET

L. 140 cm

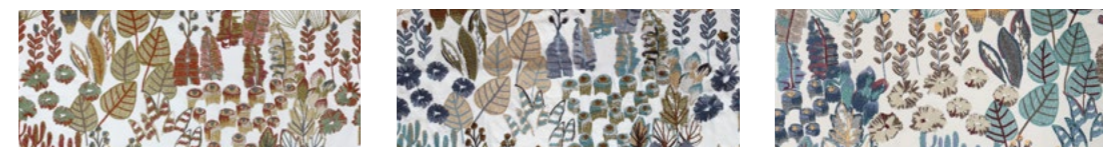


Col. 01 White Cotton T192870001  
 Col. 02 Twill Taupe T192870002  
 Col. 03 Cognac T192870003  
 Col. 04 Terracotta T192870004  
 Col. 05 Burgundy Wine T192870005  
 Col. 06 Sage Green T192870006  
 Col. 07 Marine Blue T192870007

COMPOSITION: PILE: 65% CO + 35% LI | WEIGHT: 760 g/ml | PILLING: 5 | LIGHTFASTNESS: 3/4 | MARTINDALE: 45.000 CC | RAPPORT: H2,5 x V2,5 cm.

## CHRONIQUES DE VOYAGE

L. 136 (use 130 cm)



Col. 01 Autumn Dream T192930001  
 Col. 02 Spring Earth T192930002  
 Col. 03 River Reflections T192930003

COMPOSITION: 100% CO (Embroidery: 100% PL) | WEIGHT: 731 g/ml | LIGHTFASTNESS: 4 | MARTINDALE: 30.000 CC | RAPPORT: H65 x V76 cm | BCI | OEKO-TEX 100 | GOTS.

## FANTAISIE

L. 142 (use 128 cm)



Col. 01 Retro Light T192920001  
 Col. 02 Maxims Doré T192920002  
 Col. 03 Golden Era T192920003

COMPOSITION: 100% CO (Embroidery: 80% VI + 20% PL) | WEIGHT: 580 g/ml | LIGHTFASTNESS: 4 | MARTINDALE: 30.000 CC | RAPPORT: H64 x V77 cm | BCI | OEKO-TEX 100 | GOTS.

## HAUT DÉSSERT

L. 140 cm



Col. 01 Linen Shades T193020001  
Col. 02 Greige T193020002  
Col. 03 Terracotta Hues T193020003  
Col. 04 Chocolate Mix T193020004  
Col. 05 Green Leaves T193020005  
Col. 06 Blue Universe T193020006

COMPOSITION: 62% PL + 19% CO + 13% VI + 6% LI | WEIGHT: 520 g/ml | PILLING: 3/4 | LIGHTFASTNESS: >4 | MARTINDALE: 45.000 CC | RAPPORT: H3,5 x V3 cm | FR: BS 5852 Source 0 + CALL TB117 PASS. BS 5852 Source 1 Under Request.

## INDIGÈNE

L. 138 cm



Col. 01 Natural Hues T193010001  
Col. 02 Autumn Dream T193010002  
Col. 03 Bleu Universe T193010003

COMPOSITION: 48% CO + 20% PL + 15% LI + 12% VI + 2% PC + 2% WO + 1% PA | WEIGHT: 970 g/ml | PILLING: 3/4 | LIGHTFASTNESS: 4/5 | MARTINDALE: 45.000 CC | RAPPORT: H16,5 x V33 cm | FR: BS 5852 Source 0 + CALL TB117 PASS. BS 5852 Source 1 Under Request.

## LA VIE

L. 139 (use 128 cm)



Col. 01 Retro Light T192910001  
Col. 02 Maxims Doré T192910002  
Col. 03 Golden Era T192910003

COMPOSITION: 100% LI (Embroidery: 80% VI + 20% PL) | WEIGHT: 528 g/ml | LIGHTFASTNESS: 4 | MARTINDALE: 30.000 CC | RAPPORT: H64 x V59 cm | OEKO-TEX 100 | GOTS.

## L'ESPRIT AFRICAIN

L. 140 cm



Col. 01 Serengeti Gris T193030001  
Col. 02 Nuances de Dune T193030002  
Col. 03 Plage Africaine T193030003  
Col. 04 Lin Marin T193030004  
Col. 05 Bleu Zanzibar T193030005

COMPOSITION: 30% VI + 29% CO + 27% PL + 14% LI | WEIGHT: 650 g/ml | PILLING: 3/4 | LIGHTFASTNESS: 4/5 | MARTINDALE: 45.000 CC | RAPPORT: H7,5 x V39,5 cm | FR: BS 5852 Source 0 + CALL TB117 PASS. BS 5852 Source 1 Under Request.

## SAVOIR-FAIRE

L. 147 (use 133 cm)



Col. 01 Retro Light T192900001  
Col. 02 Maxims Doré T192900002  
Col. 03 Golden Era T192900003

COMPOSITION: 100% CO (Embroidery: 80% VI + 20% PL) | WEIGHT: 566 g/ml | LIGHTFASTNESS: 4 | MARTINDALE: 30.000 CC | RAPPORT: H33,5 x V19,5 cm | BCI | OEKO-TEX 100 | GOTS.

## MÉRIDIENNE

L. 140 cm



Col. 01 Natural White T192840001  
Col. 02 Milky White T192840002  
Col. 03 Linen T192840003  
Col. 04 Golden Linen T192840004  
Col. 05 Cognac T192840005  
Col. 06 Canyon Clay T192840006  
Col. 07 Taupe T192840007



Col. 08 Khaki Green T192840008  
Col. 09 Aquarelle T192840009  
Col. 10 Blue Haze T192840010  
Col. 11 Steel Gray T192840011  
Col. 12 Ink Blue T192840012

COMPOSITION: 52% VI + 42% CO + 6% LI | WEIGHT: 1000 g/ml | PILLING: 3/4 | LIGHTFASTNESS: 4/5 | MARTINDALE: 45.000 CC | FR: BS 5852 Source 0 + CALL TB117 PASS. BS 5852 Source 1 Under Request.

## TAILLEUR

L. 140 cm



Col. 01 White Sand T192850001  
Col. 02 Greige T192850002  
Col. 03 Terracotta Hues T192850003  
Col. 04 Mixed Canvas T192850004  
Col. 05 Blue Universe T192850005

COMPOSITION: 44% CO + 36% PL + 11% PC + 4% LI + 2% WO + 2% VI + 1% PA | WEIGHT: 770 g/ml | PILLING: 3/4 | LIGHTFASTNESS: 4/5 | MARTINDALE: 45.000 CC | FR: BS 5852 Source 0 + CALL TB117 PASS. BS 5852 Source 1 Under Request.

## VOYAGEUR

L. 138 cm



Col. 01 Natural White T192860001  
Col. 02 Sand T192860002  
Col. 03 Linen T192860003  
Col. 04 Taupe T192860004  
Col. 05 Clay T192860005  
Col. 06 Khaki Green T192860006  
Col. 07 Silver Gray T192860007



Col. 08 Stone Blue T192860008  
Col. 09 Chocolate T192860009

COMPOSITION: 81% CO + 19% PL | WEIGHT: 430 g/ml | PILLING: 3/4 | LIGHTFASTNESS: >4 | DOUBLE FACE | MARTINDALE: 45.000 CC | FR: BS 5852 Source 0 + CALL TB117 PASS. BS 5852 Source 1 Under Request.

**INFLUENCE** L. 297 (use 283 cm)



Col. 01  
Natural White  
T192950001

COMPOSITION: 63% CO + 37% PL (Embroidery: 100% PC) | WEIGHT: 579 g/ml | LIGHTFASTNESS: 4 | RAPPORT: H69,5 x V59 cm | BCI | OEKO-TEX 100 | GOTS.

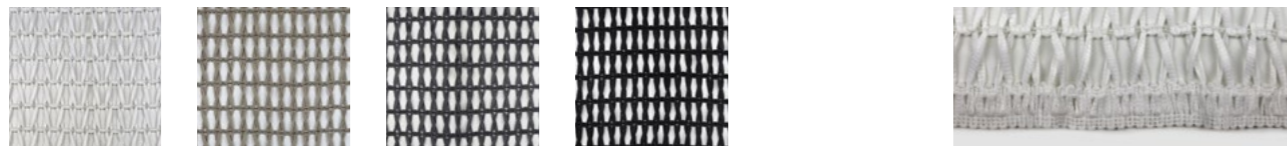
**VOLUPTÉ DE LA VIE** L. 295 (use 283 cm)



Col. 01  
Natural White  
T192940001

COMPOSITION: 63% CO + 37% PL (Embroidery: 80% VI + 20% PL) | WEIGHT: 649 g/ml | LIGHTFASTNESS: 4 | RAPPORT: H72 x V79 cm | BCI | OEKO-TEX 100 | GOTS

**JENNY** L. 300 + 5 cm



Col. 01  
Natural White  
T193000001

Col. 02  
Linen  
T193000002

Col. 03  
Steel Gray  
T193000003

Col. 04  
Black  
T193000004

Detail Finish  
Both ends  
Selvedges 2,5 cm

COMPOSITION: 100% PL | WEIGHT: 1037 g/ml | LIGHTFASTNESS: 4 | RAPPORT: H3,5 x V3 cm.

**ECO FR WLB** L. 300 cm



Col. 01  
Natural White  
T192970001

Col. 02  
Milkshake  
T192970002

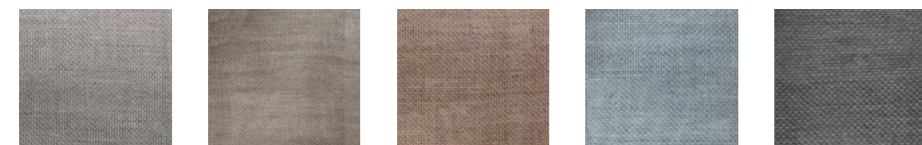
Col. 03  
Parchment  
T192970003

Col. 04  
Linen  
T192970004

Col. 05  
Dove  
T192970005

Col. 06  
Blush Rose  
T192970006

Col. 07  
Silver Gray  
T192970007



Col. 08  
Stone Gray  
T192970008

Col. 09  
Dark Taupe  
T192970009

Col. 10  
Canyon Sunset  
T192970010

Col. 11  
Riverside Blue  
T192970011

Col. 12  
Steel Gray  
T192970012

COMPOSITION: 84% REC PL FR + 16% PL FR | WEIGHT: 245 g/ml | LIGHTFASTNESS: 4 | FR: M1 | GLOBAL RECYCLED STANDARD | OEKO-TEX 100 | WITH LEAD BAND.

**LIMA WLB** L. 320 cm



Col. 01  
Natural White  
T192980001

Col. 02  
Oyster  
T192980002

Col. 03  
Silver Gray  
T192980003

COMPOSITION: 100% PL | WEIGHT: 390 g/ml | LIGHTFASTNESS: 4 | WITH LEAD BAND.

**LULU WLB** L. 300 cm



Col. 01  
Pure White  
T192990001

Col. 02  
Ivory  
T192990002

Col. 03  
Milkshake  
T192990003

Col. 04  
Silver Gray  
T192990004

Col. 05  
Dove  
T192990005

Col. 06  
Linen  
T192990006

COMPOSITION: 100% PL | WEIGHT: 279 g/ml | LIGHTFASTNESS: 4 | WITH LEAD BAND.

**GLORIA FR** L. 330 cm



Col. 01  
Pure White  
T192690001

Col. 02  
Natural White  
T192690002

Col. 03  
Off-White  
T192690003

Col. 04  
Calico  
T192690004

Col. 05  
Linen  
T192690005

Col. 06  
Quary  
T192690006

Col. 07  
Soff Taupe  
T192690007



Col. 08  
Earth Stone  
T192690008



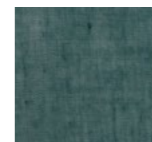
Col. 09  
Beaver  
T192690009



Col. 10  
Dusk Blue  
T192690010



Col. 11  
Ocean Blue  
T192690011



Col. 12  
Teal  
T192690012



Col. 13  
Navy Blue  
T192690013

COMPOSITION: 100% RECYCLED PL FR | WEIGHT: 248 g/ml | LIGHTFASTNESS: 5 | FR: BS5867-2 type B + EN 13773 + M1 + B1 | GLOBAL RECYCLED STANDARD.

**MARIAS FR** L. 320 cm



Col. 01  
Natural White  
T192680001

Col. 02  
Rice  
T192680002

Col. 03  
Dove  
T192680003

Col. 04  
Smoke  
T192680004

Col. 05  
Linen  
T192680005

COMPOSITION: 100% RECYCLED PL FR | WEIGHT: 275 g/ml | LIGHTFASTNESS: 5 | FR: BS5867-2 type B + EN 13773 + M1 + B1 | GLOBAL RECYCLED STANDARD.



ALVORADA BLACKOUT FR

L. 320 cm



COMPOSITION: 100% PL FR | WEIGHT: 1312 g/ml | LIGHTFASTNESS: 5 | FR: BS5867-2 type B + EN 13773 + M1 + B1 | THERMAL RESISTANCE CERTIFICATE.

DOUBLE FACE BLACKOUT FR

L. 300 cm



COMPOSITION: 100% PL FR | WEIGHT: 1065 g/ml | LIGHTFASTNESS: 5 | FR: EN 13773 Class 1 + BS5867-2 type B + IMO 7 + NFPA 701 + B1 | SOUND ABSORPTION CERTIFICATE.

NIGHTDREAM BLACKOUT FR

L. 315 cm



COMPOSITION: 100% RECYCLED PL FR | WEIGHT: 1055 g/ml | LIGHTFASTNESS: 5 | FR: BS5867-2 type B + IMO 7 + B1 | GLOBAL RECYCLED STANDARD.

LILARGE

L. 325/330 cm



COMPOSITION: 100% LI | WEIGHT: 792 g/ml | LIGHTFASTNESS: 4 | AZO FREE.

LINACE

L. 315/320 cm



COMPOSITION: 100% LI | WEIGHT: 742 g/ml | LIGHTFASTNESS: 4/5 | AZO FREE.

ALMO FR L. 140 cm



COMPOSITION: 78% PL + 10% PC + 7% LI + 5% WO | WEIGHT: 665 g/ml | PILLING: 4 | LIGHTFASTNESS: 4/5 | MARTINDALE: 100.000 CC | FR: BS 5852 SOURCE 0 + NFPA 260 + EN1021-1.

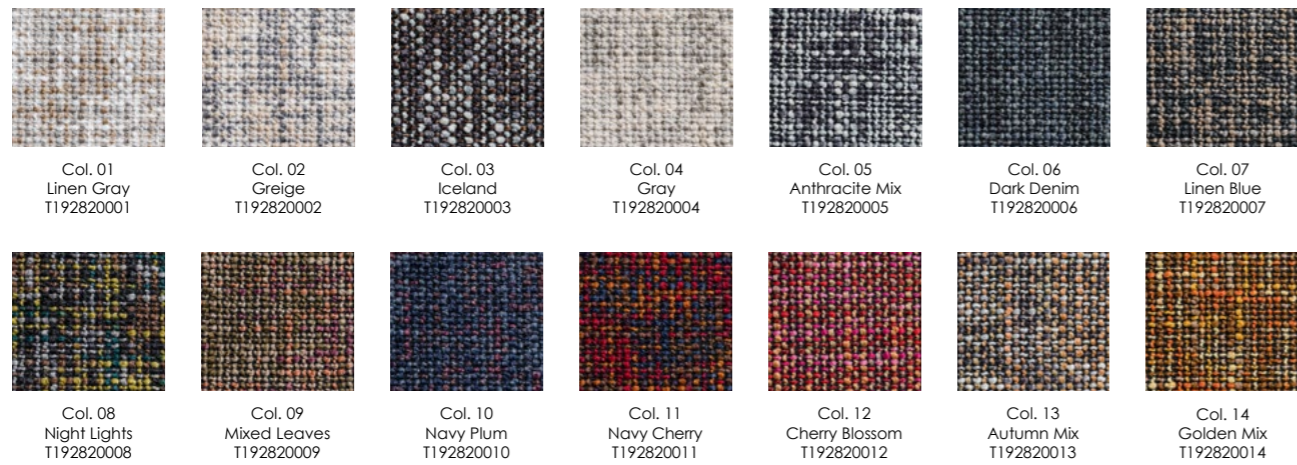
BICAS WATER REPELLENT FR L. 140 cm



Col. 01 Natural Nude T192700001

COMPOSITION: 100% PL | WEIGHT: 525 g/ml | PILLING: 4 | LIGHTFASTNESS: 4 | MARTINDALE: 40.000 CC | FR: BS 5852 SOURCE 0 + NFPA 260 + EN1021-1.

CHIADO FR L. 140 cm



COMPOSITION: 100% PL | WEIGHT: 686 g/ml | PILLING: 4 | LIGHTFASTNESS: 4 | MARTINDALE: 40.000 CC | FR: BS 5852 SOURCE 0 + NFPA 260 + EN1021-1 | REACH COMPLIES.

CAMPO WATER REPELLENT FR L. 140 cm



COMPOSITION: 90% PL + 10% PC | WEIGHT: 686 g/ml | PILLING: 4 | LIGHTFASTNESS: 5 | MARTINDALE: 145.000 CC | FR: BS 5852 SOURCE 0 + NFPA 260 + EN1021-1.

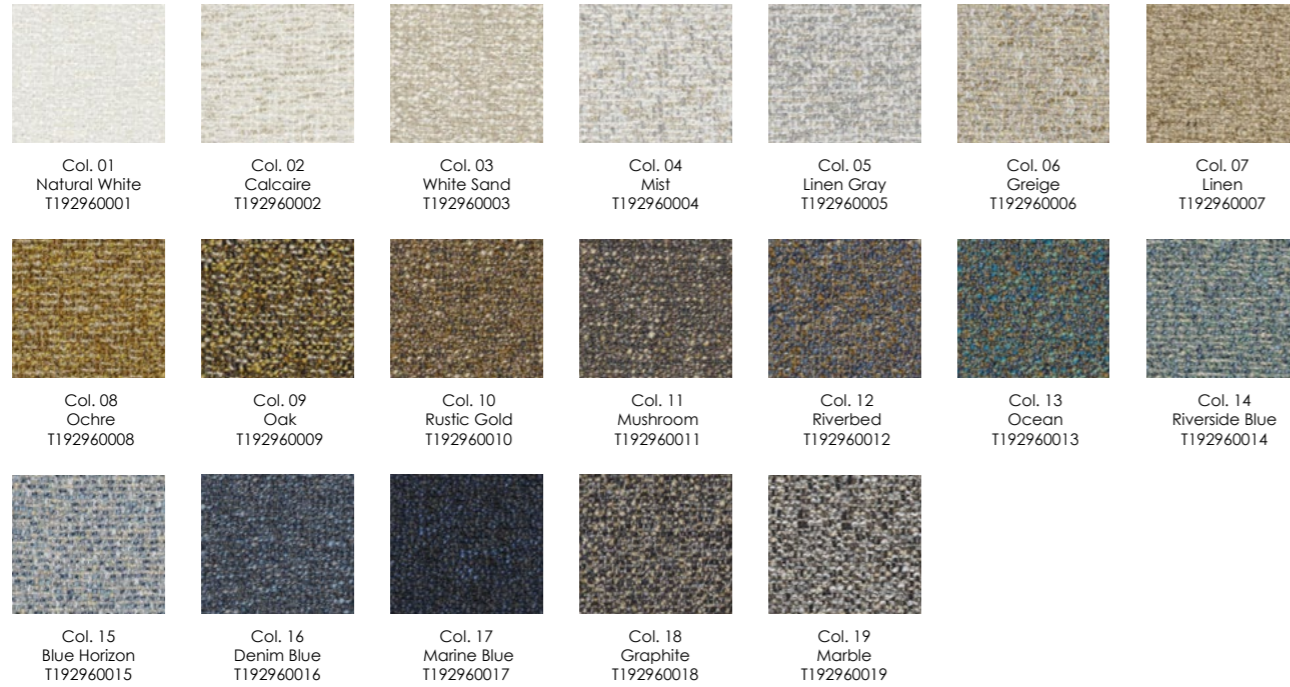
CHALET FR L. 140 cm



COMPOSITION: 100% PL | WEIGHT: 560 g/ml | PILLING: 4 | LIGHTFASTNESS: 4/5 | MARTINDALE: 50.000 CC | FR: BS 5852 SOURCE 0 + NFPA 260 + EN1021-1.

**GARRET EASY CLEAN FR**

L. 138 cm



COMPOSITION: 51% REC PL + 49% PL | WEIGHT: 809 g/ml | PILLING: 4 | LIGHTFASTNESS: 6 | MARTINDALE: 40.000 CC | FR: BS 5852 Source 0 + CALL 117 + NFPA 260 + MVSS 302 PASS. BS 5852 Source 1 Under Request. | GLOBAL RECYCLED STANDARD | OEKO-TEX 100 | PFC FREE.

**GRACE WATER REPELLENT FR**

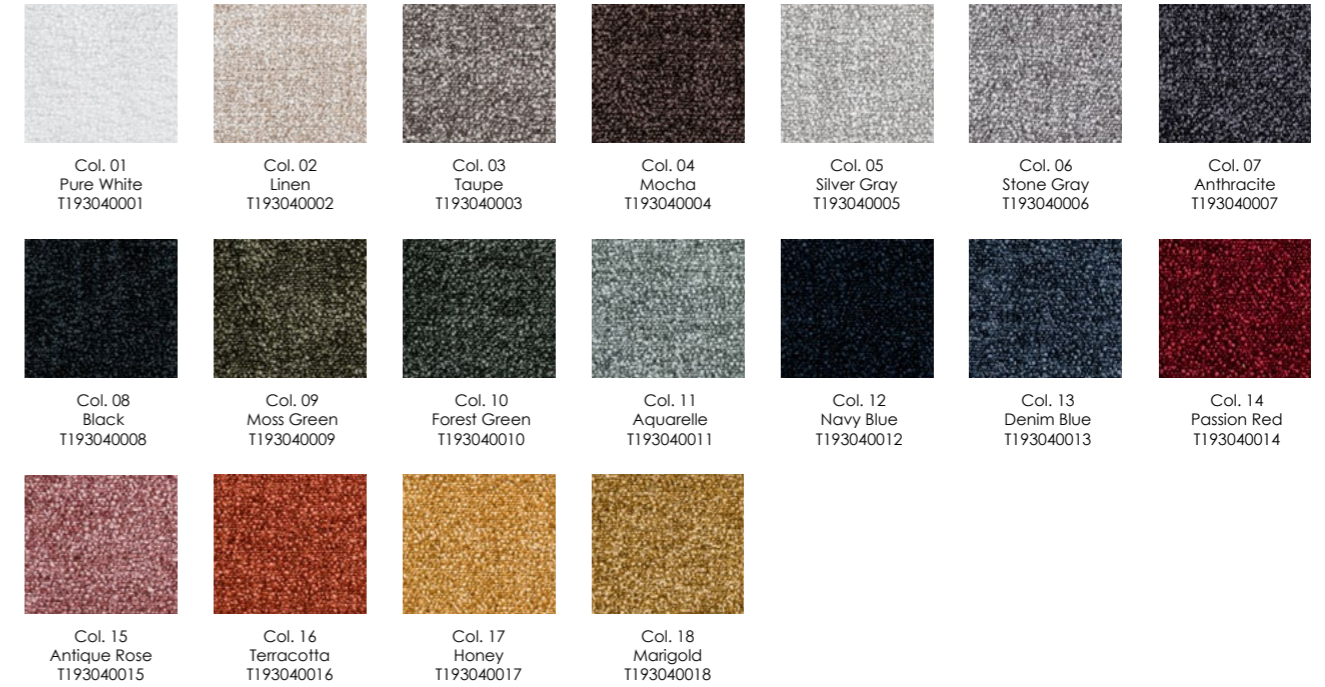
L. 140 cm



COMPOSITION: 100% PL | WEIGHT: 490 g/ml | PILLING: 4/5 | LIGHTFASTNESS: 5 | MARTINDALE: 80.000 CC | FR: BS 5852 SOURCE 0 + NFPA 260 + EN1021-1. | REACH COMPLIES.

**KELLY FR**

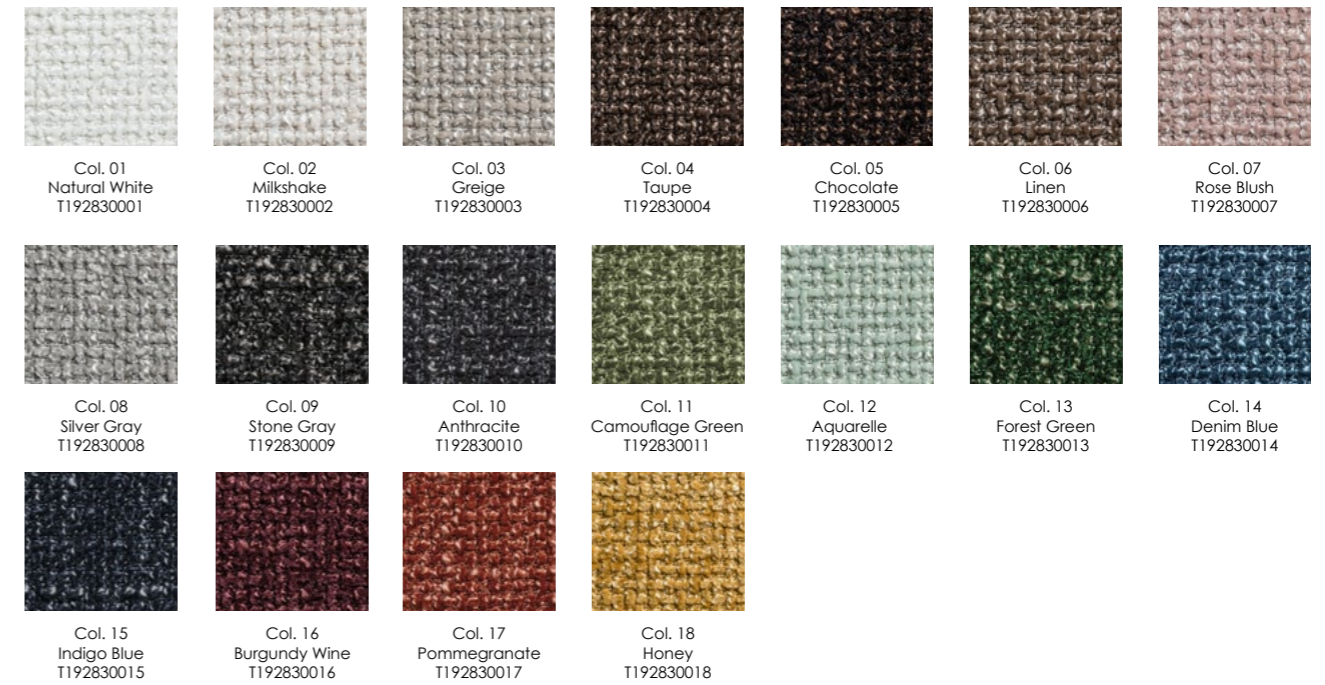
L. 140 cm



COMPOSITION: 100% PL | WEIGHT: 595 g/ml | PILLING: 4/5 | LIGHTFASTNESS: 3/4 | MARTINDALE: 80.000 CC | FR: BS 5852 SOURCE 0 + NFPA 260 + EN1021-1 | REACH COMPLIES | OEKO-TEX 100.

**MILY FR**

L. 140 cm



COMPOSITION: 100% PL | WEIGHT: 609 g/ml | PILLING: 4/5 | LIGHTFASTNESS: 4/5 | MARTINDALE: 100.000 CC | FR: BS 5852 SOURCE 0 + NFPA 260 + EN1021-1 | REACH COMPLIES | OEKO-TEX 100.

SPATIA WATER REPELLENT FR

L. 140 cm



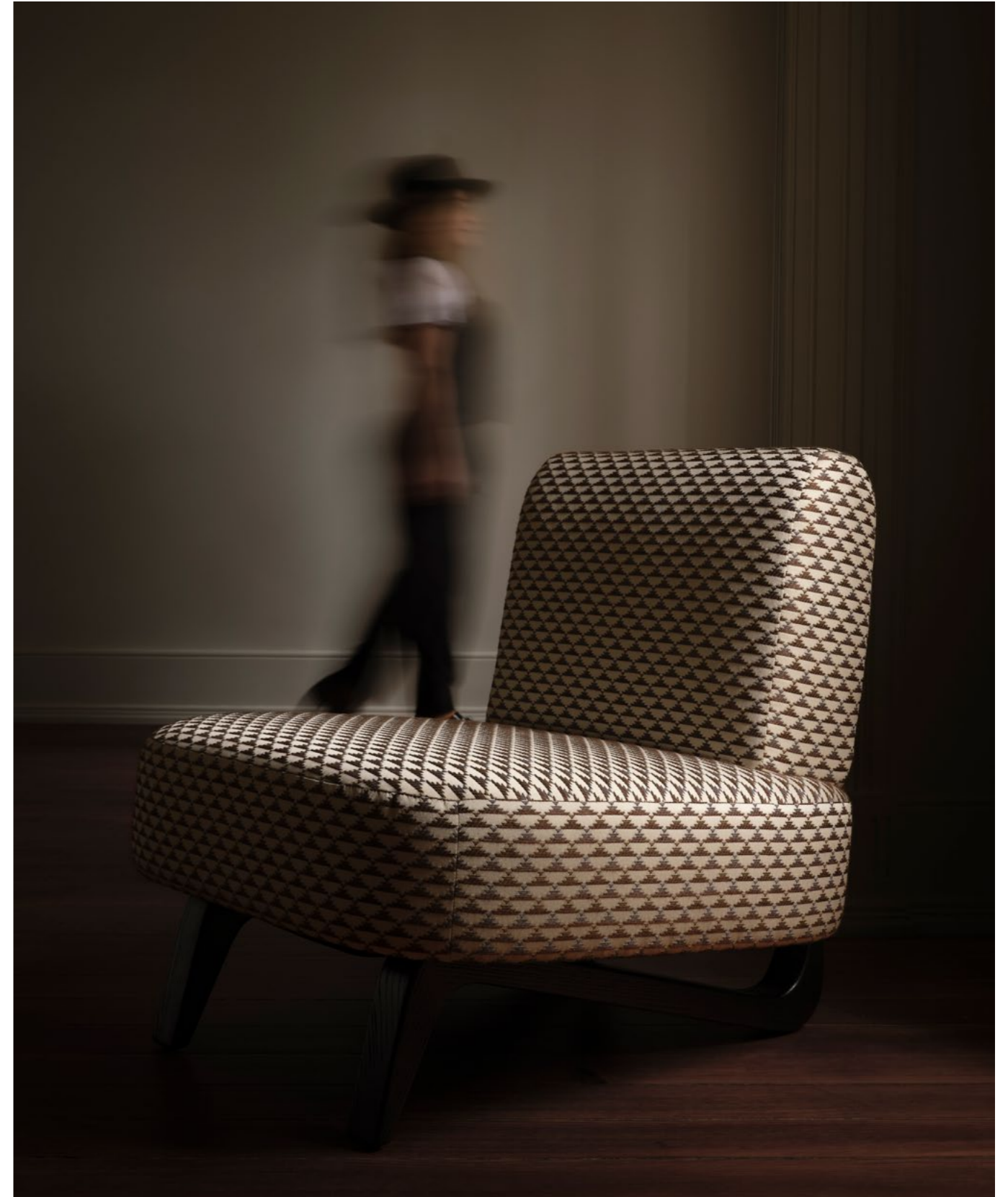
COMPOSITION: 100% PL | WEIGHT: 560 g/ml | PILLING: 4/5 | LIGHTFASTNESS: 5 | MARTINDALE: 40.000 CC | FR: BS 5852 SOURCE 0 + NFPA 260 + EN1021-1.

TWEEDY

L. 140 cm



COMPOSITION: 100% PL | WEIGHT: 910 g/ml | PILLING: 5 | LIGHTFASTNESS: 4/5 | MARTINDALE: 84.000 CC | FR: BS 5852 CRIB 5 BACKING AVAILABLE UPON REQUEST | OEKO-TEX 100 | GLOBAL RECYCLED STANDARD





## Participation Participação

ALDECO | [www.aldeco.pt](http://www.aldeco.pt)

Pags. armchairs 16 | 17 | screens 17 | armchair 41 | 43.

ARQUITETO ANTÓNIO AROSO

Pags. chaise long 09 | 10 | 11.

DUISTT | [duistt.com](http://duistt.com)

Pags. pouff 09 | 12 | 13 | armchair 25 | 26 | 29 | 30 | 31 | table lamp & armchair 32 | 33  
| 34 | 35 | stool 37 | 38 | side tables 45 | 47 | 48 | 49 | 51 armchairs & side table 52 | 53.

HMD FURNITURE | [hmdfurniture.com](http://hmdfurniture.com)

Pags. armchairs 19 | 21 | 22 | 45 | 46 | 47.

JMS | MORE CONTRACT | [www.jms.pt](http://www.jms.pt)

armchairs

PELCORTE | [pelcorte.com](http://pelcorte.com)

Pags. sofas 05 | 12 | 13 | 33 | 35 | armchairs 48 | 49 | 51 | 71 | 72 | 55 | 56.

## Place to visit Local a visitar

CASA SÃO ROQUE CENTRO DE ARTE | [www.casasroque.art/](http://www.casasroque.art/)

 **WALLDECO**  
Wallpapers & Wallcoverings



  
**ALDECO**



**NORTE2020**  
PROGRAMA OPERACIONAL REGIONAL DO NORTE

**PORTUGAL**  
2020

 **UNIÃO EUROPEIA**  
Fundo Europeu de  
Desenvolvimento Regional

[www.aldeco.pt](http://www.aldeco.pt)

Production and Design by Aldeco - Interior Fabrics | Photography by Paulo Carvalho  
No part of this publication may be reproduced without prior permission Aldeco - Interior Fabrics

# Aldeco World

## Where to find us



### HEAD OFFICE:

Rua da Saibreira 265/269  
Parque Industrial de Grijó  
4415-538 Grijó  
Vila Nova de Gaia  
Portugal  
Tel.: (+351) 227 537 230  
(national landline call)  
Fax.: (+351) 227 531 062  
E-mail: [aldecogeral@aldeco.pt](mailto:aldecogeral@aldeco.pt)

### PORTO SHOWROOM

Galerias Douro Foz  
Rua do Ouro, 508  
4150-553 Porto  
Portugal  
Tel.: (+351) 226 079 410  
(national landline call)  
Fax: (+351) 226 079 419  
E-mail: [aldecoporto@aldeco.pt](mailto:aldecoporto@aldeco.pt)

### LISBOA SHOWROOM

Restelo Business Center  
Av. Ilha da Madeira, 35-K-3ºB  
1400-376-Lisboa  
Tel.: (+351) 213 951 540  
(national landline call)  
Fax: (+351) 213 951 541  
E-mail: [aldecolisboa@aldeco.pt](mailto:aldecolisboa@aldeco.pt)

### ALGARVE SHOWROOM:

Av. Vilamoura XXI,  
Ed. Portal de Vilamoura,  
Bloco B, r/c, Lj. A  
8125-406 Quarteira  
Portugal  
Tel.: (+351) 289 323 245  
(national landline call)  
Fax: (+351) 289 323 246  
E-mail: [aldecoalgarve@aldeco.pt](mailto:aldecoalgarve@aldeco.pt)

### MADRID SHOWROOM:

Barrio de Salamanca  
Calle de Lagasca, 132  
28006 Madrid  
Tel.: (+34) 914 879 563  
(national spanish landline call)  
Spain  
E-mail: [abitaredealdeco@aldeco.pt](mailto:abitaredealdeco@aldeco.pt)



WWW.ALDECO.PT